

## Anti-CEND1/BM88 Rabbit pAb



WL02589

For Research Use Only. Not For Use In Diagnostic Procedures

## Product Information

<b>Product name</b>	Anti-CEND1/BM88 Rabbit pAb	
<b>Source</b>	Rabbit	
<b>Species reactivity</b>	Human, Mouse, Rat	
<b>Tested applications</b>	WB	1:1000-1:2000
	IHC	1:200
<b>Cellular localization</b>	Membrane	
<b>Pack size</b>	50/100/200/500/1000µl	
<b>Storage</b>	Store at -20°C. <b>Avoid freeze/thaw cycles.</b>	
<b>Storage buffer</b>	Supplied in 20 mM phosphate (pH 7.5), 150 mM NaCl, 100 µg/ml BSA, 50% glycerol and less than 0.02% sodium azide	

## General Information

**Background**

Bm88, also known as CEND1 (cell cycle exit and neuronal differentiation protein 1), is a 149 amino acid protein that belongs to the CEND1 family. It is implicated in the synchronization of cell cycle exit and differentiation of neuronal precursors in the developing nervous system, and its expression marks the exit of proliferative cells from the cell cycle. It has recently been shown that neural progenitor cells (NPCs) that overexpress CEND1 display increased neuronal differentiation in a mouse model of brain injury, suggesting its potential use as a therapeutic intervention for neurodegenerative diseases and brain injury.

**Immunogen**

Polyclonal antibody is produced by immunizing animals with a synthetic peptide of CEND1/BM88.

**Purification**

Polyclonal antibody was purified by Protein A affinity chromatography.

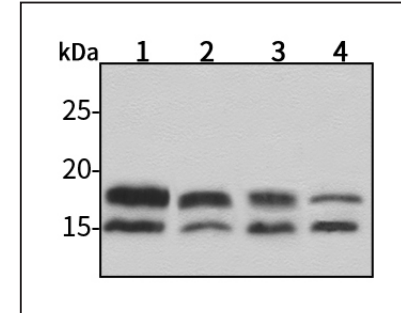
## Anti-CEND1/BM88 Rabbit pAb



WL02589

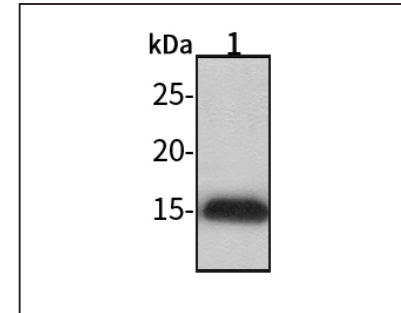
For Research Use Only. Not For Use In Diagnostic Procedures

## Product Images



Western blot-Anti-CEND1/BM88 pAb

Lane 1: Human HepG2 cell lysate  
 Lane 2: Human Hela cell lysate  
 Lane 3: Human BGC-823 cell lysate  
 Lane 4: Human MGC-803 cell lysate  
 All lanes: Anti-CEND1/BM88 at 1:1000 dilution  
 Lysates/proteins at 20-50 µg per lane.  
 Predicted band size: 15 kDa  
 Observed band size: 15 kDa



Western blot-Anti-CEND1/BM88 pAb

Lane 1: Mouse brain tissue lysate 30  
 All lanes: Anti-CEND1/BM88 at 1:1000 dilution  
 Lysates/proteins at 20-50 µg per lane.  
 Predicted band size: 15 kDa  
 Observed band size: 15 kDa