

Anti-Apolipoprotein E Rabbit pAb



WL03172

For Research Use Only. Not For Use In Diagnostic Procedures

Product Information

Product name	Anti-Apolipoprotein E Rabbit pAb
Source	Rabbit
Species reactivity	Human, Mouse, Rat
Tested applications	WB 1:1000-1:2000
Pack size	50/100/200/500/1000µl
Storage	Store at -20°C. Avoid freeze/thaw cycles.
Storage buffer	Supplied in 20 mM phosphate (pH 7.5), 150 mM NaCl, 100 µg/ml BSA, 50% glycerol and less than 0.02% sodium azide

General Information

Background	Chylomicron remnants and very low density lipoprotein (VLDL) remnants are rapidly removed from the circulation by receptor-mediated endocytosis in the liver. Apolipoprotein E (APOE), a main apoprotein of the chylomicron, binds to a specific receptor on liver cells and peripheral cells. ApoE is essential for the normal catabolism of triglyceride-rich lipoprotein constituents. The APOE gene is mapped to chromosome 19 in a cluster with APOC1 and APOC2. Defects in apolipoprotein E result in familial dysbetalipoproteinemia, or type III hyperlipoproteinemia (HLP III), in which increased plasma cholesterol and triglycerides are the consequence of impaired clearance of chylomicron and VLDL remnants.
Immunogen	Polyclonal antibody is produced by immunizing animals with a synthetic peptide of Apolipoprotein E.
Purification	Polyclonal antibody was purified by Protein A affinity chromatography.

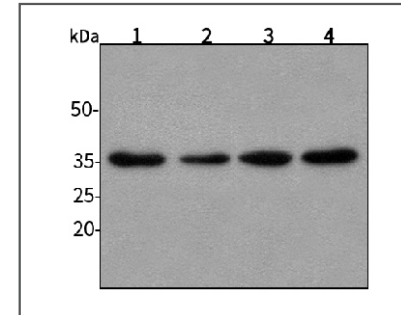
Anti-Apolipoprotein E Rabbit pAb



WL03172

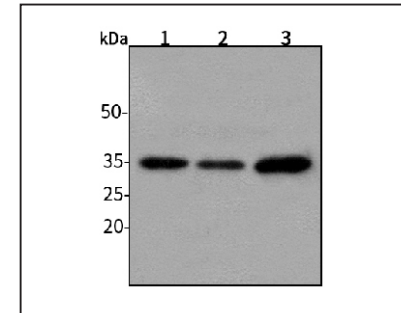
For Research Use Only. Not For Use In Diagnostic Procedures

Product Images



Western blot-Anti-Apolipoprotein E pAb

Lane 1: Human HepG2 cell lysate
 Lane 2: Human HeLa cell lysate
 Lane 3: Human BGC-823 cell lysate
 Lane 4: Human MGC-803 cell lysate
 All lanes: Anti-Apolipoprotein E at 1:1000 dilution
 Lysates/proteins at 20-50 µg per lane.
 Predicted band size: 36 kDa
 Observed band size: 36 kDa



Western blot-Anti-Apolipoprotein E pAb

Lane 1: Mouse kidney tissue lysate
 Lane 2: Mouse heart tissue lysate
 Lane 3: Rat brain tissue lysate
 All lanes: Anti-Apolipoprotein E at 1:1000 dilution
 Lysates/proteins at 20-50 µg per lane.
 Predicted band size: 36 kDa
 Observed band size: 36 kDa