

## Anti-PIK3CA Rabbit pAb



WL05017

For Research Use Only. Not For Use In Diagnostic Procedures

## Product Information

<b>Product name</b>	Anti-PIK3CA Rabbit pAb	
<b>Source</b>	Rabbit	
<b>Species reactivity</b>	Human, Mouse, Rat	
<b>Tested applications</b>	WB	1:1000-1:2000
<b>Cellular localization</b>	Secreted and Cell membrane	
<b>Pack size</b>	50/100/200/500/1000µl	
<b>Storage</b>	Store at -20°C. <b>Avoid freeze/thaw cycles.</b>	
<b>Storage buffer</b>	Supplied in 20 mM phosphate (pH 7.5), 150 mM NaCl, 100 µg/ml BSA, 50% glycerol and less than 0.02% sodium azide	

## General Information

**Background** PIK3CA belongs to the PI3/PI4-kinase family. It phosphorylates PtdIns, PtdIns4P and PtdIns(4,5)P2 with a preference for PtdIns(4,5)P2. This gene has been found to be oncogenic and has been implicated in cervical cancers. A pseudogene of this gene has been defined on chromosome 22.

**Immunogen** Polyclonal antibody is produced by immunizing animals with a synthetic peptide of PIK3CA.

**Purification** Polyclonal antibody was purified Protein A affinity chromatography.

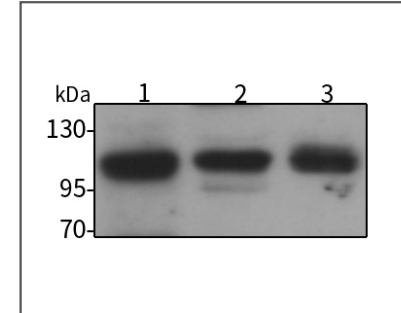
## Anti-PIK3CA Rabbit pAb



WL05017

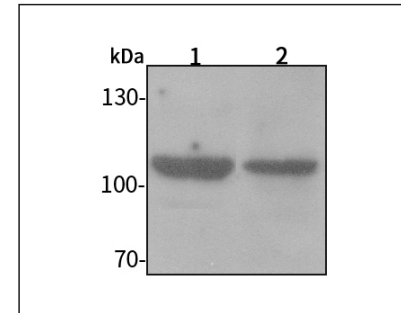
For Research Use Only. Not For Use In Diagnostic Procedures

## Product Images



## Western blot-Anti-PIK3CA pAb

Lane 1: Human HEK-293 cell lysate  
 Lane 2: Human A549 cell lysate  
 Lane 3: Human HUVEC cell lysate  
 All lanes: Anti-PIK3CA at 1:1000 dilution  
 Lysates/proteins at 20-50 µg per lane.  
 Predicted band size: 110 kDa  
 Observed band size: 110 kDa



## Western blot-Anti-PIK3CA pAb

Lane 1: Mouse heart tissue lysate  
 Lane 2: Rat lung tissue lysate  
 All lanes: Anti-PIK3CA at 1:1000 dilution  
 Lysates/proteins at 20-50 µg per lane.  
 Predicted band size: 110 kDa  
 Observed band size: 110 kDa