

Anti-GLP1 Rabbit pAb



WL01022

For Research Use Only. Not For Use In Diagnostic Procedures

Product Information

Product name	Anti-GLP1 Rabbit pAb	
Source	Rabbit	
Species reactivity	Human, Mouse, Rat	
Tested applications	WB	1:1000-1:2000
	IHC	1:200-1:600
	IF	1:500
Cellular localization	Secreted	
Pack size	50/100/200/500/1000μl	
Storage	Store at -20°C. Avoid freeze/thaw cycles.	
Storage buffer	Supplied in 20 mM phosphate (pH 7.5), 150 mM NaCl, 100 μg/ml	
	BSA, 50% glycerol and less than 0.02% sodium azide	

General Information

Background	Glucose homeostasis is regulated by a variety of hormones including glucagon. Glucagon is synthesized as the precursor molecule proglucagon and is proteolytically processed to yield the mature peptide in α cells of the pancreatic islets. The gene encoding GLP1 maps to human chromosome 19, which consists of over 63 million bases, houses approximately 1,400 genes and is recognized for having the greatest gene density of the human chromosomes. Glucagon causes the release of glucose from glycogen and stimulates gluconeogenesis in the liver.
Immunogen	Polyclonal antibody is produced by immunizing animals with a synthetic peptide of GLP1.
Purification	Polyclonal antibody was purified by protein A affinity chromatography.

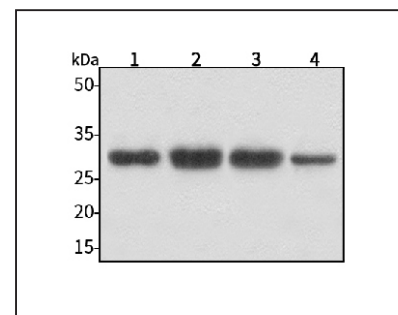
Anti-GLP1 Rabbit pAb



WL01022

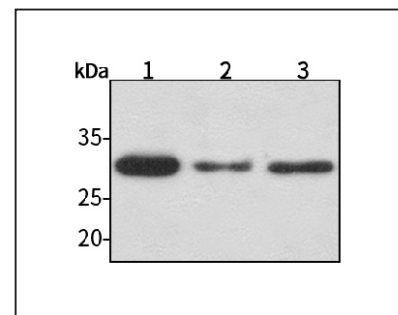
For Research Use Only. Not For Use In Diagnostic Procedures

Product Images



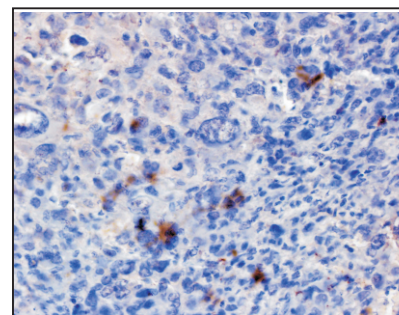
Western blot-Anti-GLP1 pAb

Lane 1: Human HepG2 cell lysate
 Lane 2: Human Hela cell lysate
 Lane 3: Human BGC-823 cell lysate
 Lane 4: Human MGC-803 cell lysate
 All lanes: Anti-GLP1 at 1:1000 dilution
 Lysates/proteins at 20-50 μg per lane.
 Predicted band size: 21 kDa
 Observed band size: 30 kDa



Western blot-Anti-GLP1 pAb

Lane 1: Mouse heart tissue lysate
 Lane 2: Rat lung tissue lysate
 Lane 3: Rat colon tissue lysate
 All lanes: Anti-GLP1 at 1:1000 dilution
 Lysates/proteins at 20-50 μg per lane.
 Predicted band size: 21 kDa
 Observed band size: 30 kDa



Immunohistochemistry-Anti-GLP1 pAb

Immunohistochemical analysis of paraffin-embedded human osteosarcoma using anti-GLP1 Rabbit Antibody at 1:400 dilution. Perform heat mediated antigen retrieval with Tris-EDTA buffer pH 9.0

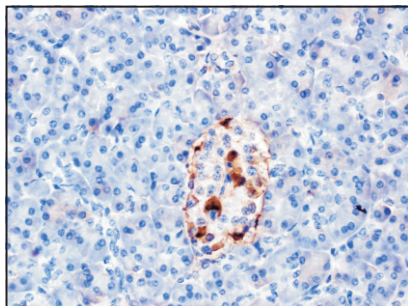
Anti-GLP1 Rabbit pAb



WL01022

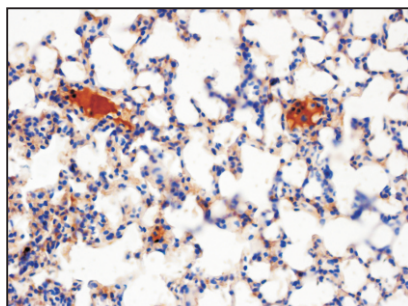
For Research Use Only. Not For Use In Diagnostic Procedures

Product Images



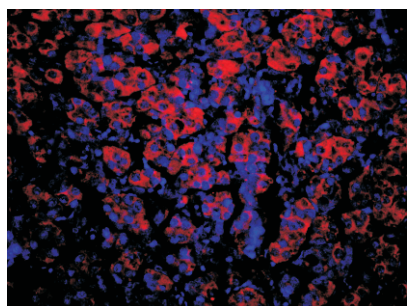
Immunohistochemistry-Anti-GLP1 pAb

Immunohistochemical analysis of paraffin-embedded human pancreatic cancer using anti-GLP1 Rabbit Antibody at 1:400 dilution.
Perform heat mediated antigen retrieval with Tris-EDTA buffer pH 9.0



Immunohistochemistry-Anti-GLP1 pAb

Immunohistochemical analysis of paraffin-embedded mouse lung (LPS treated) using anti-GLP1 Rabbit Antibody at 1:400 dilution.
Perform heat mediated antigen retrieval with Tris-EDTA buffer pH 9.0



Immunofluorescence-Anti-GLP1 pAb

Immunofluorescence analysis of paraffin-embedded human pancreas cancer using anti-GLP1 Rabbit Antibody at 1:500 dilution.
Perform heat mediated antigen retrieval with Tris-EDTA buffer pH 9.0

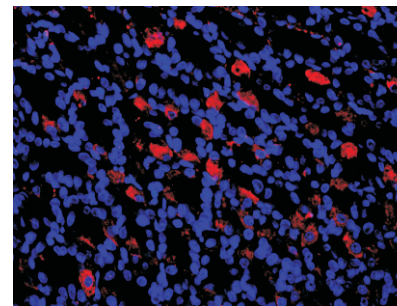
Anti-GLP1 Rabbit pAb



WL01022

For Research Use Only. Not For Use In Diagnostic Procedures

Product Images



Immunofluorescence-Anti-GLP1 pAb

Immunofluorescence analysis of paraffin-embedded rat stomach using anti-GLP1 Rabbit Antibody at 1:500 dilution.
Perform heat mediated antigen retrieval with Tris-EDTA buffer pH 9.0