

## Anti-PARK7/DJ1 Rabbit pAb



WL04462

For Research Use Only. Not For Use In Diagnostic Procedures

## Product Information

<b>Product name</b>	Anti-PARK7/DJ1 Rabbit pAb	
<b>Source</b>	Rabbit	
<b>Species reactivity</b>	Human, Mouse, Rat	
<b>Tested applications</b>	WB	1:1000-1:2000
	IHC	1:500
	IF	1:500
<b>Cellular localization</b>	Nucleus . Chromosome	
<b>Pack size</b>	50/100/200/500/1000 $\mu$ l	
<b>Storage</b>	Store at -20°C. <b>Avoid freeze/thaw cycles.</b>	
<b>Storage buffer</b>	Supplied in 20 mM phosphate (pH 7.5), 150 mM NaCl, 100 $\mu$ g/ml BSA, 50% glycerol and less than 0.02% sodium azide	

## General Information

<b>Background</b>	DJ-1 gene encodes a highly-conserved protein which is implicated in a number of cell processes. DJ-1 also positively regulates the androgen receptor (AR) by forming a complex with PIAS $\alpha$ , a negative regulator of AR. The gene encoding human DJ-1 maps to chromosome 1p36.23, a region identified as a hot spot of chromosome abnormalities in several tumor cells. Subsequently, mutations in the DJ-1 gene have been implicated in Parkinson' s disease, and loss of DJ-1 function leads to neurodegeneration.
<b>Immunogen</b>	Polyclonal antibody is produced by immunizing animals with a synthetic peptide of PARK7/DJ1.
<b>Purification</b>	Polyclonal antibody was purified by Protein A affinity chromatography.

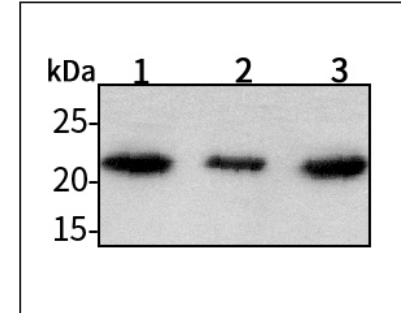
## Anti-PARK7/DJ1 Rabbit pAb



WL04462

For Research Use Only. Not For Use In Diagnostic Procedures

## Product Images



Western blot-Anti-PARK7/DJ1 pAb

Lane 1: Human HeLa cell lysate

Lane 2: Human MCF-7 cell lysate

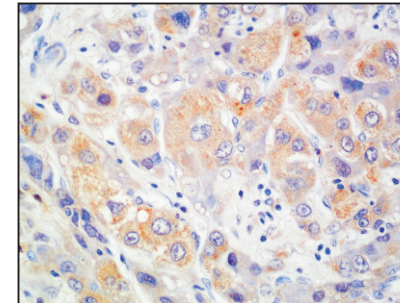
Lane 3: Human HEK-293 cell lysate

All lanes: Anti-PARK7/DJ1 at 1:1000 dilution

Lysates/proteins at 20-50  $\mu$ g per lane.

Predicted band size: 20 kDa

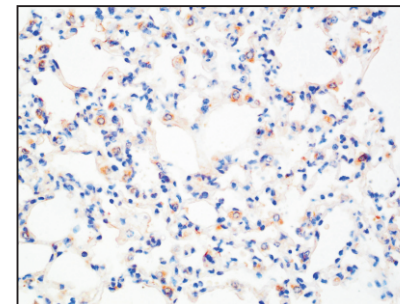
Observed band size: 23 kDa



Immunohistochemistry-Anti-PARK7/DJ1 pAb

Immunohistochemical analysis of paraffin-embedded human liver cancer using anti-PARK7/DJ1 Rabbit Antibody at 1:500 dilution.

Perform heat mediated antigen retrieval with Tris-EDTA buffer pH 9.0



Immunohistochemistry-Anti-PARK7/DJ1 pAb

Immunohistochemical analysis of paraffin-embedded mouse lung using anti-PARK7/DJ1 Rabbit Antibody at 1:500 dilution.

Perform heat mediated antigen retrieval with Tris-EDTA buffer pH 9.0

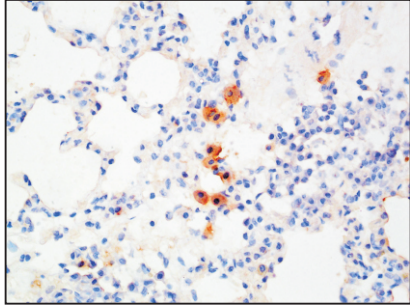
## Anti-PARK7/DJ1 Rabbit pAb



WL04462

For Research Use Only. Not For Use In Diagnostic Procedures

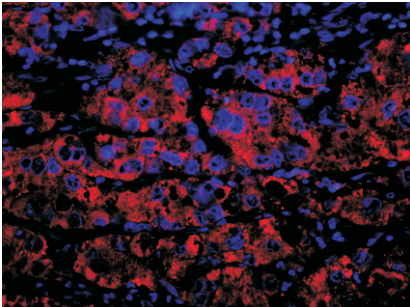
### Product Information



#### Immunohistochemistry-Anti-PARK7/DJ1 pAb

Immunohistochemical analysis of paraffin-embedded rat lung using anti-PARK7/DJ1 Rabbit Antibody at 1:500 dilution.

Perform heat mediated antigen retrieval with Tris-EDTA buffer pH 9.0



#### Immunofluorescence-Anti-PARK7/DJ1 pAb

Immunofluorescence analysis of paraffin-embedded human liver cancer using anti-PARK7/DJ1 Rabbit Antibody at 1:500 dilution.

Perform heat mediated antigen retrieval with Tris-EDTA buffer pH 9.0