

Anti-Claudin 4 Rabbit pAb



WL05091

For Research Use Only. Not For Use In Diagnostic Procedures

Product Information

Product name	Anti-Claudin 4 Rabbit pAb		
Source	Rabbit		
Species reactivity	Human		
Tested applications	WB	1:500-1:1000	
Pack size	50/100/200/500/1000μl		
Storage	Store at -20°C. Avoid freeze/thaw cycles.		
Storage buffer	Supplied in 20 mM phosphate (pH 7.5), 150 mM NaCl, 100 μg/ml BSA, 50% glycerol and less than 0.02% sodium azide		

General Information

Background	Claudins are a family of proteins that are the most important components of the tight junctions, where they establish the paracellular barrier that controls the flow of molecules in the intercellular space between the cells of an epithelium. Claudins are integral membrane proteins that are components of the epithelial cell tight junctions, which regulate movement of solutes and ions through the paracellular space.
-------------------	---

Immunogen	Polyclonal antibody is produced by immunizing animals with a synthetic peptide of Claudin 4.
------------------	--

Purification	Polyclonal antibody was purified by immunogen affinity chromatography.
---------------------	--

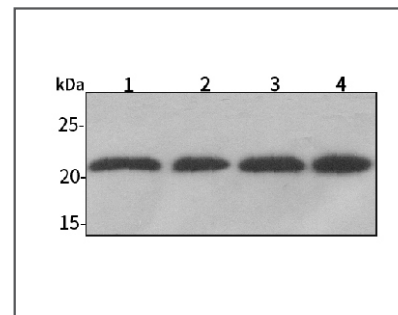
Anti-Claudin 4 Rabbit pAb



WL05091

For Research Use Only. Not For Use In Diagnostic Procedures

Product Images



Western blot-Anti-Claudin 4 pAb

Lane 1: Human Hela cell lysate
 Lane 2: Human MCF-7 cell lysate
 Lane 3: Human HEK-293 cell lysate
 Lane 4: Human HUVEC cell lysate
 All lanes: Anti-Claudin 4 at 1:1000 dilution
 Lysates/proteins at 20-50 μg per lane.
 Predicted band size: 22 kDa
 Observed band size: 22 kDa