

Anti-Cardiac Troponin T Rabbit pAb



WL04830

For Research Use Only. Not For Use In Diagnostic Procedures

Product Information

Product name	Anti-Cardiac Troponin T Rabbit pAb	
Source	Rabbit	
Species reactivity	Human, Mouse, Rat	
Tested applications	Western blot	1:500-1:1000

**Suggested working dilutions are given as a guide only. It is recommended that the user titrates the product for use in their own experiment using appropriate negative and positive controls.*

Molecular Wt.	36 kDa
Pack size	50/100/200/500/1000 μ l
Storage	Store at -20°C. Avoid freeze/thaw cycles.
Storage buffer	Supplied in 20 mM phosphate (pH 7.5), 150 mM NaCl, 100 μ g/ml BSA, 50% glycerol and less than 0.02% sodium azide

General Information

Background Cardiac Troponin T is the tropomyosin-binding subunit of the troponin complex, which is located on the thin filament of striated muscles and regulates muscle contraction in response to alterations in intracellular calcium ion concentration. Mutations in this gene have been associated with familial hypertrophic cardiomyopathy as well as with dilated cardiomyopathy.

Immunogen Polyclonal antibody is produced by immunizing animals with a synthetic peptide of Cardiac Troponin T.

Purification Polyclonal antibody was purified by immunogen affinity chromatography.

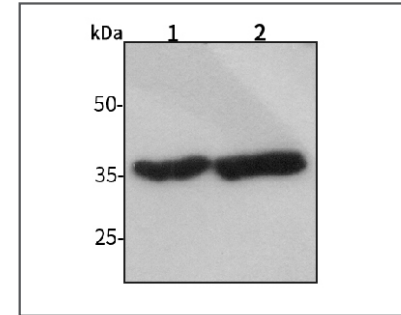
Anti-Cardiac Troponin T Rabbit pAb



WL04830

For Research Use Only. Not For Use In Diagnostic Procedures

Product Images



Western blot-Anti-Cardiac Troponin T pAb

Lane 1: Human HUVEC cell lysate 30 μ gLane 2: Human SW480 cell lysate 30 μ g

Separation gel: 11% polyacrylamide

Electrophoresis: 100V, 4°C, 3h

Transmembrane: 100V, 4°C, 1h

Blocking: 5% w/v nonfat dry milk, 1 \times TBST, at RT with gentle shaking

Primary antibody: 1:1000 in blocking buffer, 4°C, overnight

Secondary antibody (WLA023a) : 1:5000-1:10000, 45min

Detection: ECL, 30s-2min