

Anti-VGLUT2 Rabbit pAb



WL05200

For Research Use Only. Not For Use In Diagnostic Procedures

Product Information

Product name	Anti-VGLUT2 Rabbit pAb
Source	Rabbit
Species reactivity	Human, Mouse, Rat
Tested applications	Western blot 1:500-1:1000
	<i>*Suggested working dilutions are given as a guide only. It is recommended that the user titrates the product for use in their own experiment using appropriate negative and positive controls.</i>
Molecular Wt.	64 kDa
Pack size	50/100/200/500/1000μl
Storage	Store at -20°C. Avoid freeze/thaw cycles.
Storage buffer	Supplied in 20 mM phosphate (pH 7.5), 150 mM NaCl, 100 μg/ml BSA, 50% glycerol and less than 0.02% sodium azide

General Information

Background	Glutamatergic neurons release glutamate, the most common excitatory neurotransmitter. Their synaptic vesicles are filled with glutamate by vesicular glutamate transporters, VGLUTs. VGLUT1, also called solute carrier family 17 member 7 (SLC17A7), was first identified as an inorganic phosphate transporter. Despite the absence of homology with neurotransmitter transporters, VGLUT1 was later demonstrated to be a glutamate transporter specific to glutamatergic neurons.
-------------------	--

Immunogen	Polyclonal antibody is produced by immunizing animals with a synthetic peptide of VGLUT2.
------------------	---

Purification	Polyclonal antibody was purified by immunogen affinity chromatography.
---------------------	--

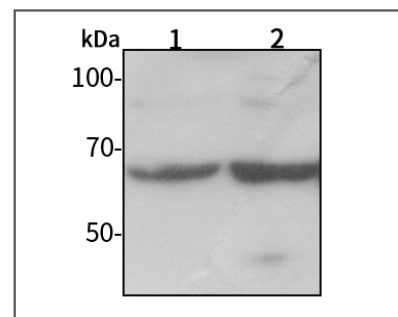
Anti-VGLUT2 Rabbit pAb



WL05200

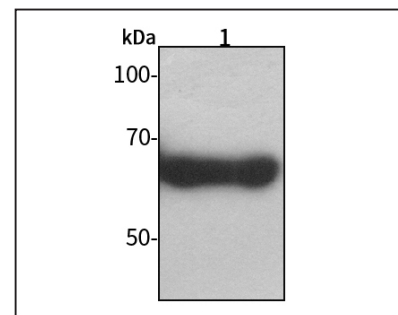
For Research Use Only. Not For Use In Diagnostic Procedures

Product Images



Western blot-Anti-VGLUT2 pAb

Lane 1: Human Hela cell lysate 20μg
 Lane 2: Human MCF-7 cell lysate 20μg
 Separation gel: 8% polyacrylamide
 Electrophoresis: 100V, 4°C, 3h
 Transmembrane: 100V, 4°C, 1h
 Blocking: 5% w/v nonfat dry milk, 1×TBST, at RT with gentle shaking
 Primary antibody: 1:1000 in blocking buffer, 4°C, overnight
 Secondary antibody (WLA023a) : 1:5000-1:10000, 45min
 Detection: ECL, 30s-2min



Western blot-Anti-VGLUT2 pAb

Lane 1: Mouse liver tissue lysate 10μg
 Separation gel: 8% polyacrylamide
 Electrophoresis: 100V, 4°C, 3h
 Transmembrane: 100V, 4°C, 1h
 Blocking: 5% w/v nonfat dry milk, 1×TBST, at RT with gentle shaking
 Primary antibody: 1:1000 in blocking buffer, 4°C, overnight
 Secondary antibody (WLA023a) : 1:5000-1:10000, 45min
 Detection: ECL, 30s-2min