

Anti-VAMP1 Rabbit pAb



WL00328

For Research Use Only. Not For Use In Diagnostic Procedures

Product Information

| | |
|------------------------------|---|
| Product name | Anti-VAMP1 Rabbit pAb |
| Source | Rabbit |
| Species reactivity | Human, Mouse, Rat |
| Tested applications | WB 1:1000-1:2000 |
| Cellular localization | Secreted and Cell membrane |
| Pack size | 50/100/200/500/1000μl |
| Storage | Store at -20°C. Avoid freeze/thaw cycles. |
| Storage buffer | Supplied in 20 mM phosphate (pH 7.5), 150 mM NaCl, 100 μg/ml BSA, 50% glycerol and less than 0.02% sodium azide |

General Information

| | |
|---------------------|--|
| Background | VAMP1, also named as synaptobrevin 1, is a member of the vesicle-associated membrane protein (VAMP)/synaptobrevin family. VAMP1 is a part of the SNARE (soluble NSF-attachment protein receptor) complex. Synaptobrevins, syntaxins, and the synaptosomal-associated protein SNAP25 are the main components of a protein complex involved in the docking and/or fusion of synaptic vesicles with the presynaptic membrane. |
| Immunogen | Polyclonal antibody is produced by immunizing animals with a synthetic peptide of VAMP1. |
| Purification | Polyclonal antibody was purified by Protein A affinity chromatography. |

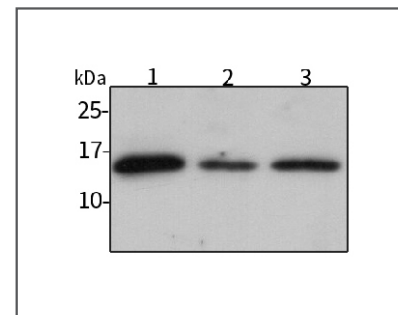
Anti-VAMP1 Rabbit pAb



WL00328

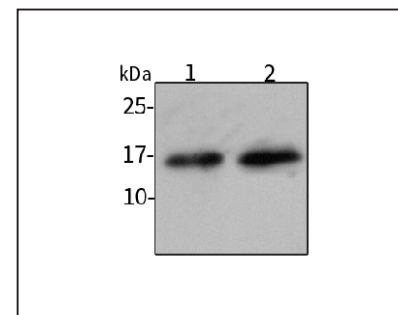
For Research Use Only. Not For Use In Diagnostic Procedures

Product Images



Western blot-Anti-VAMP1 pAb

Lane 1: Human HeLa cell lysate
 Lane 2: Human HEK-293 cell lysate
 Lane 3: Human A549 cell lysate
 All lanes: Anti-VAMP1 at 1:1000 dilution
 Lysates/proteins at 20-50 μg per lane.
 Predicted band size: 13 kDa
 Observed band size: 16 kDa



Western blot-Anti-VAMP1 pAb

Lane 1: Mouse liver tissue lysate
 Lane 2: Rat spleen tissue lysate
 All lanes: Anti-VAMP1 at 1:1000 dilution
 Lysates/proteins at 20-50 μg per lane.
 Predicted band size: 13 kDa
 Observed band size: 16 kDa