

## Anti-Endostatin/COL18A1 Rabbit pAb



WL04504

For Research Use Only. Not For Use In Diagnostic Procedures

## Product Information

<b>Product name</b>	Anti-Endostatin/COL18A1 Rabbit pAb	
<b>Source</b>	Rabbit	
<b>Species reactivity</b>	Human, Mouse, Rat	
<b>Tested applications</b>	WB	1:1000-1:2000
	IF	1:500
<b>Cellular localization</b>	Secreted. extracellular space.	
<b>Pack size</b>	50/100/200/500/1000µl	
<b>Storage</b>	Store at -20°C. <b>Avoid freeze/thaw cycles.</b>	
<b>Storage buffer</b>	Supplied in 20 mM phosphate (pH 7.5), 150 mM NaCl, 100 µg/ml BSA, 50% glycerol and less than 0.02% sodium azide	

## General Information

<b>Background</b>	Endostatin/COL18A1 is the alpha chain of type XVIII collagen. Members of the MULTIPLEXIN subgroup contain polypeptides with multiple triple-helical domains separated and flanked by nontriple-helical regions. Proteolytic processing at several endogenous cleavage sites in the C-terminal domain results in production of endostatin, a potent antiangiogenic protein that is able to inhibit angiogenesis and tumor growth.
<b>Immunogen</b>	Polyclonal antibody is produced by immunizing animals with a synthetic peptide of Endostatin/COL18A1.
<b>Purification</b>	Polyclonal antibody was purified by Protein A affinity chromatography.

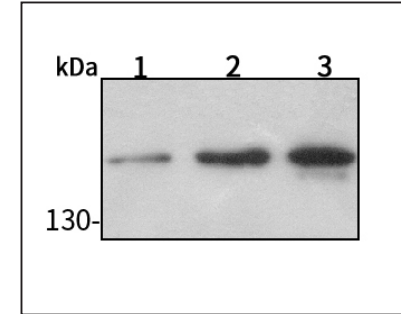
## Anti-Endostatin/COL18A1 Rabbit pAb



WL04504

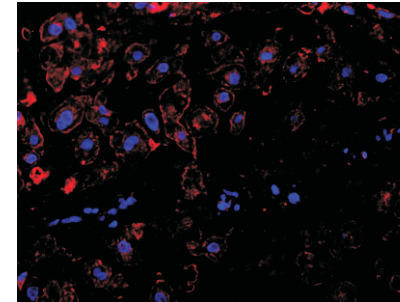
For Research Use Only. Not For Use In Diagnostic Procedures

## Product Images



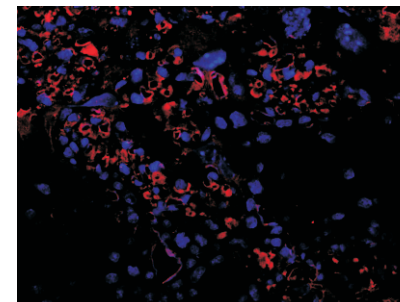
## Western blot-Anti-Endostatin/COL18A1 pAb

Lane 1: Human Hela cell lysate  
 Lane 2: Human MCF-7 cell lysate  
 Lane 3: Human HEK-293 cell lysate  
 All lanes: Anti-Endostatin/COL18A1 at 1:1000 dilution  
 Lysates/proteins at 20-50 µg per lane  
 Predicted band size: 178 kDa  
 Observed band size: 178 kDa



## Immunofluorescence-Anti-Endostatin/COL18A1 pAb

Immunofluorescence analysis of paraffin-embedded human placenta using anti-Endostatin/COL18A1 Rabbit Antibody at 1:500 dilution.  
 Perform heat mediated antigen retrieval with Tris-EDTA buffer pH 9.0



## Immunofluorescence-Anti-Endostatin/COL18A1 pAb

Immunofluorescence analysis of paraffin-embedded mouse placenta using anti-Endostatin/COL18A1 Rabbit Antibody at 1:500 dilution.  
 Perform heat mediated antigen retrieval with Tris-EDTA buffer pH 9.0