

Anti-IRE1 Rabbit pAb



WL05219

For Research Use Only. Not For Use In Diagnostic Procedures

Product Information

Product name	Anti-IRE1 Rabbit pAb		
Source	Rabbit		
Species reactivity	Human, Mouse, Rat		
Tested applications	Western blot	1:1000-1:2000	
Pack size	50/100/200/500/1000μl		
Storage	Store at -20°C. Avoid freeze/thaw cycles.		
Storage buffer	Supplied in 20 mM phosphate (pH 7.5), 150 mM NaCl, 100 μg/ml BSA, 50% glycerol and less than 0.02% sodium azide		

General Information

Background	The accumulation of unfolded proteins within the endoplasmic reticulum (ER) of yeast and mammalian cells activates the unfolded protein response (UPR) pathway and leads to the transcription of ER-specific genes involved in protein folding. One of the players in UPR, IRE1, was first identified in <i>Saccharomyces cerevisiae</i> as a transmembrane serine/threonine kinase. Recently, IRE1α was shown to mediate the rapid degradation of certain mRNAs based on the ER-localization and primary sequences of their encoded proteins, suggesting a novel mechanism in UPR.
Immunogen	Polyclonal antibody is produced by immunizing animals with a synthetic peptide of IRE1.
Purification	Polyclonal antibody was purified by Protein A affinity chromatography.

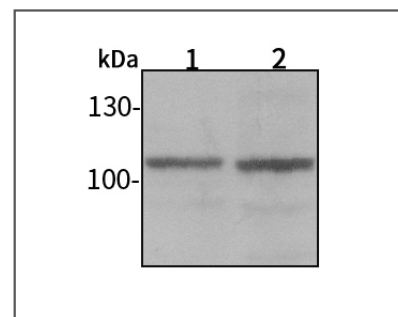
Anti-IRE1 Rabbit pAb



WL05219

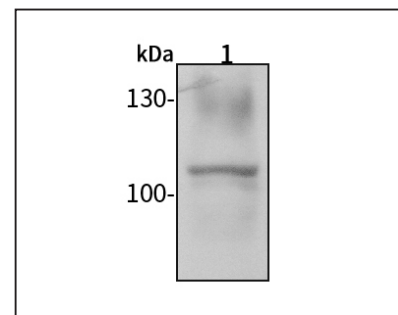
For Research Use Only. Not For Use In Diagnostic Procedures

Product Images



Western blot-Anti-IRE1 pAb

Lane 1: Human MCF-7 cell lysate
 Lane 2: Human HEK-293 cell lysate
 All lanes: Anti-IRE1 at 1:1000 dilution
 Lysates/proteins at 20-50 μg per lane.
 Predicted band size: 110 kDa
 Observed band size: 110 kDa



Western blot-Anti-IRE1 pAb

Lane 1: Mouse liver tissue lysate
 All lanes: Anti-IRE1 at 1:1000 dilution
 Lysates/proteins at 20-50 μg per lane.
 Predicted band size: 110 kDa
 Observed band size: 110 kDa