

Anti-P-C-Jun (S243) Rabbit pAb



WL05439

For Research Use Only. Not For Use In Diagnostic Procedures

Product Information

Product name	Anti-P-C-Jun (S243) Rabbit pAb
Source	Rabbit
Species reactivity	Human, Mouse, Rat
Tested applications	WB 1:1000-1:2000
Pack size	50/100/200/500/1000µl
Storage	Store at -20°C. Avoid freeze/thaw cycles.
Storage buffer	Supplied in 20 mM phosphate (pH 7.5), 150 mM NaCl, 100 µg/ml BSA, 50% glycerol and less than 0.02% sodium azide

General Information

Background

This gene is believed to be the transforming gene of avian papillomavirus 17. The protein it encodes is highly similar to viral proteins and directly interacts with specific target DNA sequences to regulate gene expression. This gene has no introns and is located at 1p32-p31. It is involved in KRAS mediated USP28 transcriptional activation in colorectal cancer (CRC) cells and binds to the USP28 promoter in CRC cells. Together with FOSB, it plays a role in activation induced T cell death by binding to the AP-1 promoter site of FASLG/CD95L and inducing its transcription in response to activation of the TCR/CD3 signaling pathway.

Immunogen

Polyclonal antibody is produced by immunizing animals with a synthetic peptide of P-C-Jun (S243) .

Purification

Polyclonal antibody was purified by Protein A affinity chromatography.

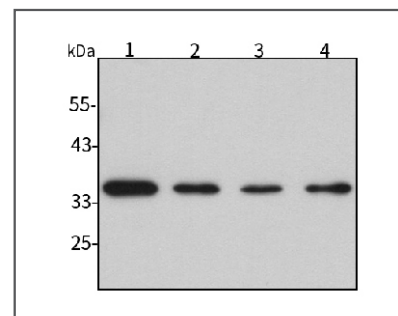
Anti-P-C-Jun (S243) Rabbit pAb



WL05439

For Research Use Only. Not For Use In Diagnostic Procedures

Product Images



Western blot-Anti-P-C-Jun (S243) pAb

Lane 1: Human HCT116 cell lysate

Lane 2: Human MDA-MB-231 cell lysate

Lane 3: Human A549 cell lysate

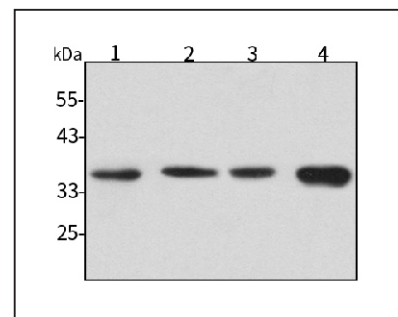
Lane 4: Human HUVEC cell lysate

All lanes: Anti-P-C-Jun (S243) at 1:1000 dilution

Lysates/proteins at 20-50 µg per lane

Predicted band size: 36 kDa

Observed band size: 36 kDa



Western blot-Anti-P-C-Jun (S243) pAb

Lane 1: Mouse kidney tissue lysate

Lane 2: Mouse lung tissue lysate

Lane 3: Rat colon tissue lysate

Lane 4: Rat small intestine tissue lysate

All lanes: Anti-P-C-Jun (S243) at 1:1000 dilution

Lysates/proteins at 20-50 µg per lane

Predicted band size: 36 kDa

Observed band size: 36 kDa