

## Anti-LMX1b Rabbit pAb



WL05144

For Research Use Only. Not For Use In Diagnostic Procedures

## Product Information

<b>Product name</b>	Anti-LMX1b Rabbit pAb	
<b>Source</b>	Rabbit	
<b>Species reactivity</b>	Human	
<b>Tested applications</b>	WB	1:500-1:1000
<b>Pack size</b>	50/100/200/500/1000μl	
<b>Storage</b>	Store at -20°C. <b>Avoid freeze/thaw cycles.</b>	
<b>Storage buffer</b>	Supplied in 20 mM phosphate (pH 7.5), 150 mM NaCl, 100 μg/ml BSA, 50% glycerol and less than 0.02% sodium azide	

## General Information

<b>Background</b>	LMX1b encodes a member of LIM-homeodomain family of proteins containing two N-terminal zinc-binding LIM domains, 1 homeodomain, and a C-terminal glutamine-rich domain. It functions as a transcription factor, and is essential for the normal development of dorsal limb structures, the glomerular basement membrane, the anterior segment of the eye, and dopaminergic and serotonergic neurons.
<b>Immunogen</b>	Polyclonal antibody is produced by immunizing animals with a synthetic peptide of LMX1b.
<b>Purification</b>	Polyclonal antibody was purified by immunogen affinity chromatography.

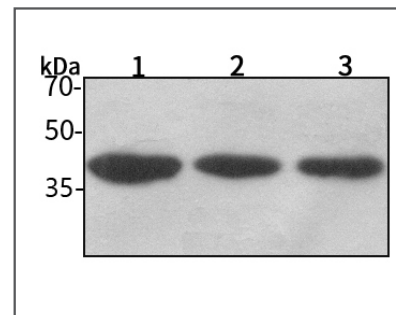
## Anti-LMX1b Rabbit pAb



WL05144

For Research Use Only. Not For Use In Diagnostic Procedures

## Product Images



## Western blot-Anti-LMX1b pAb

Lane 1: Human MCF-7 cell lysate

Lane 2: Human HEK-293 cell lysate

Lane 3: Human HUVEC cell lysate

All lanes: Anti-LMX1b at 1:1000 dilution

Lysates/proteins at 20-50 μg per lane.

Predicted band size: 42 kDa

Observed band size: 42 kDa