

## Anti-Glutamine Synthetase Rabbit pAb



WL05394

For Research Use Only. Not For Use In Diagnostic Procedures

## Product Information

<b>Product name</b>	Anti-Glutamine Synthetase Rabbit pAb		
<b>Source</b>	Rabbit		
<b>Species reactivity</b>	Human, Mouse, Rat		
<b>Tested applications</b>	WB	1:1000-1:2000	
<b>Pack size</b>	50/100/200/500/1000µl		
<b>Storage</b>	Store at -20°C. <b>Avoid freeze/thaw cycles.</b>		
<b>Storage buffer</b>	Supplied in 20 mM phosphate (pH 7.5), 150 mM NaCl, 100 µg/ml BSA, 50% glycerol and less than 0.02% sodium azide		

## General Information

<b>Background</b>	GLUL (Glutamine synthetase) is also named as GS, GLNS and belongs to the glutamine synthetase family. This enzyme has 2 functions: it catalyzes the production of glutamine and 4-aminobutanoate (gamma-aminobutyric acid, GABA), the latter in a pyridoxal phosphate-independent manner. By similarity. Essential for proliferation of fetal skin fibroblasts.
-------------------	---

<b>Immunogen</b>	Polyclonal antibody is produced by immunizing animals with a synthetic peptide of Glutamine Synthetase.
------------------	---

<b>Purification</b>	Polyclonal antibody was purified by Protein A affinity chromatography.
---------------------	--

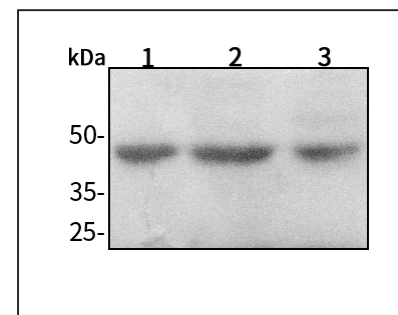
## Anti-Glutamine Synthetase Rabbit pAb



WL05394

For Research Use Only. Not For Use In Diagnostic Procedures

## Product Images



Western blot-Anti-Glutamine Synthetase pAb

Lane 1: Human MCF-7 cell lysate

Lane 2: Human HEK-293 cell lysate

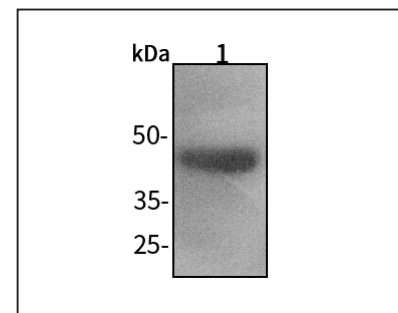
Lane 3: Human HUVEC cell lysate

All lanes: Anti-Glutamine Synthetase at 1:1000 dilution

Lysates/proteins at 20-50 µg per lane.

Predicted band size: 42 kDa

Observed band size: 42 kDa



Western blot-Anti-Glutamine Synthetase pAb

Lane 1: Mouse heart tissue lysate

All lanes: Anti-Glutamine Synthetase at 1:1000 dilution

Lysates/proteins at 20-50 µg per lane.

Predicted band size: 42 kDa

Observed band size: 42 kDa