

Anti-TrkA Rabbit pAb



WL01390

For Research Use Only. Not For Use In Diagnostic Procedures

Product Information

Product name	Anti-TrkA Rabbit pAb	
Source	Rabbit	
Species reactivity	Human	
Tested applications	Western blot	1:1000-1:2000
	<i>*Suggested working dilutions are given as a guide only. It is recommended that the user titrates the product for use in their own experiment using appropriate negative and positive controls.</i>	
Molecular Wt.	glycosylated TrkA : 140kDa	
Pack size	50/100/200/500/1000µl	
Storage	Store at -20°C. Avoid freeze/thaw cycles.	
Storage buffer	Supplied in 20 mM phosphate (pH 7.5), 150 mM NaCl, 100 µg/ml BSA, 50% glycerol and less than 0.02% sodium azide	

General Information

Background	The family of Trk receptor tyrosine kinases consists of TrkA, TrkB, and TrkC. While the sequence of these family members is highly conserved, they are activated by different neurotrophins. In the adult nervous system, the Trk receptors regulate synaptic strength and plasticity. TrkA regulates proliferation and is important for development and maturation of the nervous system. Phosphorylation at Tyr490 is required for Shc association and activation of the Ras-MAP kinase cascade. Residues Tyr674/675 lie within the catalytic domain, and phosphorylation at these sites reflects TrkA kinase activity. TrkA is activated in many malignancies including breast, ovarian, prostate, and thyroid carcinomas.
Immunogen	Polyclonal antibody is produced by immunizing animals with a synthetic peptide of TrkA.
Purification	Polyclonal antibody was purified by Protein A affinity chromatography.

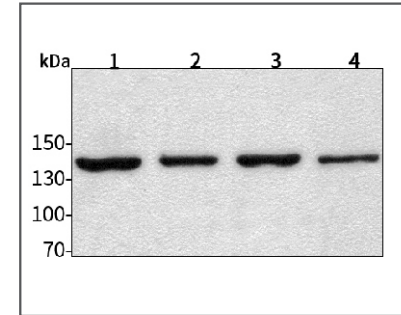
Anti-TrkA Rabbit pAb



WL01390

For Research Use Only. Not For Use In Diagnostic Procedures

Product Images



Western blot-Anti-TrkA pAb

Lane 1: Human HepG2 cell lysate 30µg

Lane 2: Human Hela cell lysate 30µg

Lane 3: Human BGC-823 cell lysate 30µg

Lane 4: Human MGC-803 cell lysate 30µg

Separation gel: 8% polyacrylamide

Electrophoresis: 100V, 4°C, 3h

Transmembrane: 100V, 4°C, 1h

Blocking: 5% w/v nonfat dry milk, 1× TBST, at RT with gentle shaking

Primary antibody: 1:1000 in blocking buffer, 4°C, overnight

Visualization: ECL, 30s-2min