

Anti-PKC  $\delta$  Rabbit pAb

WL02708

For Research Use Only. Not For Use In Diagnostic Procedures

## Product Information

<b>Product name</b>	Anti-PKC $\delta$ Rabbit pAb	
<b>Source</b>	Rabbit	
<b>Species reactivity</b>	Human	
<b>Tested applications</b>	Western blot	1:500-1:1000
	<i>*Suggested working dilutions are given as a guide only. It is recommended that the user titrates the product for use in their own experiment using appropriate negative and positive controls.</i>	
<b>Molecular Wt.</b>	78 kDa	
<b>Pack size</b>	50/100/200/500/1000 $\mu$ l	
<b>Storage</b>	Store at -20°C. <b>Avoid freeze/thaw cycles.</b>	
<b>Storage buffer</b>	Supplied in 20 mM phosphate (pH 7.5), 150 mM NaCl, 100 $\mu$ g/ml BSA, 50% glycerol and less than 0.02% sodium azide	

## General Information

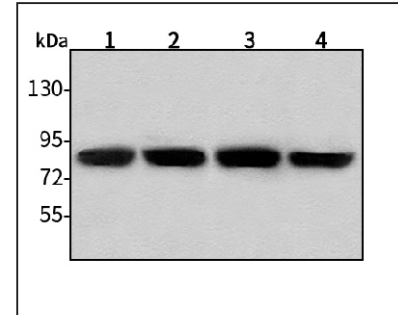
<b>Background</b>	Protein kinase C (PKC) is a family of serine- and threonine-specific protein kinases that can be activated by calcium and the second messenger diacylglycerol. Novel (n)PKCs include the $\delta$ , $\epsilon$ , $\eta$ , and $\theta$ isoforms, and require DAG, but do not require $\text{Ca}^{2+}$ for activation. Thus, conventional and novel PKCs are activated through the same signal transduction pathway as phospholipase C. On the other hand, atypical (a)PKCs (including protein kinase M $\zeta$ and $\iota$ / $\lambda$ isoforms) require neither $\text{Ca}^{2+}$ nor diacylglycerol for activation.
<b>Immunogen</b>	Polyclonal antibody is produced by immunizing animals with a synthetic peptide of PKC $\delta$ .
<b>Purification</b>	Polyclonal antibody was purified by immunogen affinity chromatography.

Anti-PKC  $\delta$  Rabbit pAb

WL02708

For Research Use Only. Not For Use In Diagnostic Procedures

## Product Images

Western blot-Anti-PKC  $\delta$  pAbLane 1: Human HeLa cell lysate 30 $\mu$ gLane 2: Human BGC-823 cell lysate 30 $\mu$ gLane 3: Human MGC-803 cell lysate 30 $\mu$ gLane 4: Human SGC-7901 cell lysate 30 $\mu$ g

Separation gel: 8% polyacrylamide

Electrophoresis: 100V, 4°C, 3h

Transmembrane: 100V, 4°C, 1h

Blocking: 5% w/v nonfat dry milk, 1 $\times$  TBST, at RT with gentle shaking

Primary antibody: 1:1000 in blocking buffer, 4°C, overnight

Secondary antibody (WLA023a) : 1:5000-1:10000, 45min

Visualization: ECL