

Anti-Xanthine Oxidase A Rabbit pAb



WL01013

For Research Use Only. Not For Use In Diagnostic Procedures

Product Information

Product name	Anti-Xanthine Oxidase Rabbit pAb	
Source	Rabbit	
Species reactivity	Human, Mouse, Rat	
Tested applications	WB	1:1000-1:2000
	IHC	1:500
	IF	1:500
Cellular localization	Cytoplasm. Peroxisome. Secreted	
Pack size	50/100/200/500/1000µl	
Storage	Store at -20°C. Avoid freeze/thaw cycles.	
Storage buffer	Supplied in 20 mM phosphate (pH 7.5), 150 mM NaCl, 100 µg/ml BSA, 50% glycerol and less than 0.02% sodium azide	

General Information

Background

Xanthine dehydrogenase belongs to the group of molybdenum-containing hydroxylases involved in the oxidative metabolism of purines. The encoded protein has been identified as a moonlighting protein based on its ability to perform mechanistically distinct functions. Xanthine dehydrogenase can be converted to xanthine oxidase by reversible sulfhydryl oxidation or by irreversible proteolytic modification. Defects in xanthine dehydrogenase cause xanthinuria, may contribute to adult respiratory stress syndrome, and may potentiate influenza infection through an oxygen metabolite-dependent mechanism.

Immunogen

Polyclonal antibody is produced by immunizing animals with a synthetic peptide of Xanthine Oxidase.

Purification

Polyclonal antibody was purified by Protein A affinity chromatography.

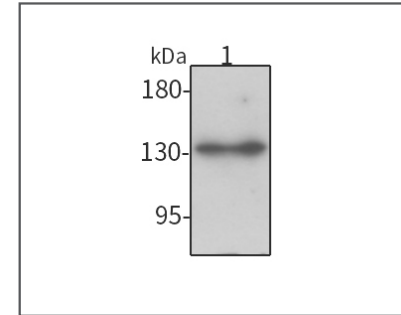
Anti-Xanthine Oxidase Rabbit pAb



WL01013

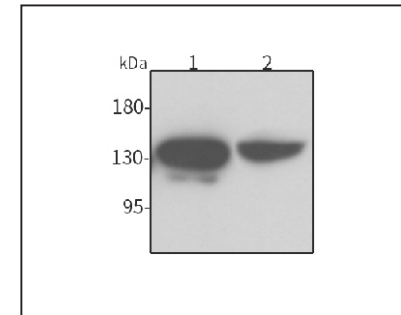
For Research Use Only. Not For Use In Diagnostic Procedures

Product Images



Western blot-Anti-Xanthine Oxidase pAb

Lane 1: Human HEK-293 cell lysate
All lanes: Anti-Xanthine Oxidase at 1:1000 dilution
 Lysates/proteins at 20-50 µg per lane.
 Predicted band size: 146 kDa
 Observed band size: 130 kDa



Western blot-Anti-Xanthine Oxidase pAb

Lane 1: Mouse liver tissue lysate
 Lane 2: Rat liver tissue lysate
All lanes: Anti-Xanthine Oxidase at 1:1000 dilution
 Lysates/proteins at 20-50 µg per lane.
 Predicted band size: 146 kDa
 Observed band size: 130 kDa