

Anti-TLE 1 Rabbit pAb



WL00305

For Research Use Only. Not For Use In Diagnostic Procedures

Product Information

Product name	Anti-TLE 1 Rabbit pAb
Source	Rabbit
Species reactivity	Human, Mouse, Rat
Tested applications	WB 1:1000-1:2000
Cellular localization	Secreted and Cell membrane
Pack size	50/100/200/500/1000µl
Storage	Store at -20°C. Avoid freeze/thaw cycles.
Storage buffer	Supplied in 20 mM phosphate (pH 7.5), 150 mM NaCl, 100 µg/ml BSA, 50% glycerol and less than 0.02% sodium azide

General Information

Background TLE1 (Transducin-like enhancer protein 1) is a transcriptional corepressor and binds to a number of transcription factors. Involved in negative regulation of I-kappaB kinase/NF-kappaB signaling; negative regulation of anoikis; and regulation of gene expression. Located in cytosol and nucleoplasm.

Immunogen Polyclonal antibody is produced by immunizing animals with a synthetic peptide of TLE 1.

Purification Polyclonal antibody was purified by Protein A affinity chromatography.

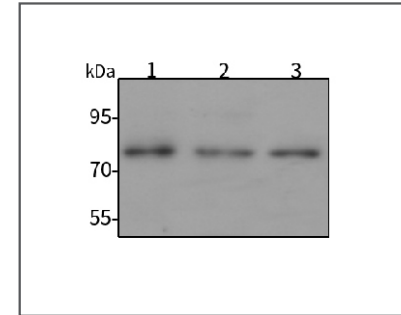
Anti-TLE 1 Rabbit pAb



WL00305

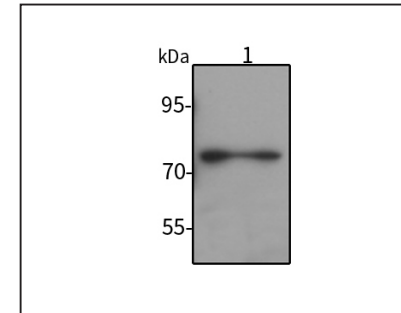
For Research Use Only. Not For Use In Diagnostic Procedures

Product Images



Western blot-Anti-TLE 1 pAb

Lane 1: Human MDA-MB-231 cell lysate
 Lane 2: Human A549 cell lysate
 Lane 3: Human HUVEC cell lysate
 All lanes: Anti-TLE 1 at 1:1000 dilution
 Lysates/proteins at 20-50 µg per lane.
 Predicted band size: 83 kDa
 Observed band size: 83 kDa



Western blot-Anti-TLE 1 pAb

Lane 1: Mouse liver tissue lysate
 All lanes: Anti-TLE 1 at 1:1000 dilution
 Lysates/proteins at 20-50 µg per lane.
 Predicted band size: 83 kDa
 Observed band size: 83 kDa