

## Anti-SDHA Rabbit pAb



WLR128

For Research Use Only. Not For Use In Diagnostic Procedures

## Product Information

<b>Product name</b>	Anti-SDHA Rabbit pAb	
<b>Source</b>	Rabbit	
<b>Species reactivity</b>	Human, Mouse, Rat	
<b>Tested applications</b>	WB	1:500-1:1000
	IHC, IF	1:100-1:200
<b>Cellular localization</b>	Mitochondrion inner membrane.	
<b>Pack size</b>	50/100/200/500/1000µl	
<b>Storage</b>	Store at -20°C. <b>Avoid freeze/thaw cycles.</b>	
<b>Storage buffer</b>	Supplied in 20 mM phosphate (pH 7.5), 150 mM NaCl, 100 µg/ml BSA, 50% glycerol and less than 0.02% sodium azide	

## General Information

<b>Background</b>	This gene encodes the main catalytic subunit of succinate ubiquinone oxidoreductase, which is a complex of the mitochondrial respiratory chain. This complex consists of four nuclear coding subunits located in the inner membrane of mitochondria. SDHA is a prognostic marker for breast cancer, renal clear cell carcinoma and renal papillary cell carcinoma, and can act as a tumor suppressor.
<b>Immunogen</b>	Polyclonal antibody is produced by immunizing animals with a synthetic peptide of SDHA.
<b>Purification</b>	Polyclonal antibody was purified by immunogen affinity chromatography.

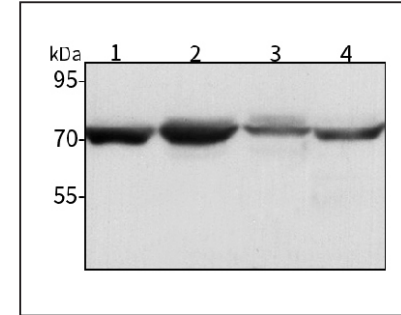
## Anti-SDHA Rabbit pAb



WLR128

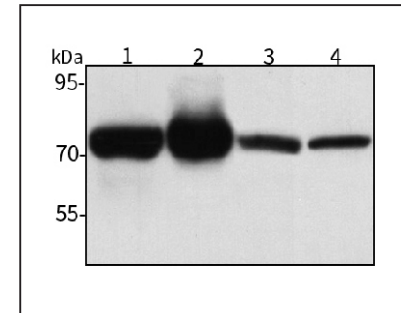
For Research Use Only. Not For Use In Diagnostic Procedures

## Product Images



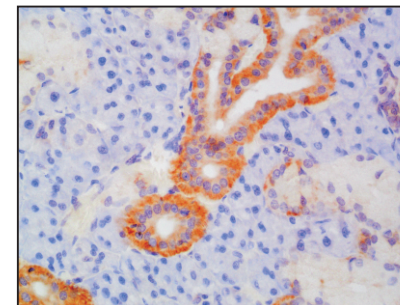
## Western blot-Anti-SDHA pAb

Lane 1: Human HEK293 cell lysate  
 Lane 2: Human HCT116 cell lysate  
 Lane 3: Human MDA-MB-231 cell lysate  
 Lane 4: Human HUVEC cell lysate  
 All lanes: Anti-SDHA at 1:1000 dilution  
 Lysates/proteins at 20-50 µg per lane  
 Predicted band size: 70 kDa  
 Observed band size: 70 kDa



## Western blot-Anti-SDHA pAb

Lane 1: Mouse kidney tissue lysate  
 Lane 1: Mouse heart tissue lysate  
 Lane 1: Mouse liver tissue lysate  
 Lane 2: Rat stomach tissue lysate  
 All lanes: Anti-SDHA at 1:1000 dilution  
 Lysates/proteins at 20-50 µg per lane  
 Predicted band size: 70 kDa  
 Observed band size: 70 kDa



## Immunohistochemistry-Anti-SDHA pAb

Immunohistochemical analysis of paraffin-embedded rat salivary gland using anti-SDHA Rabbit Antibody at 1:100 dilution.  
 Perform heat mediated antigen retrieval with Tris-EDTA buffer pH 9.0

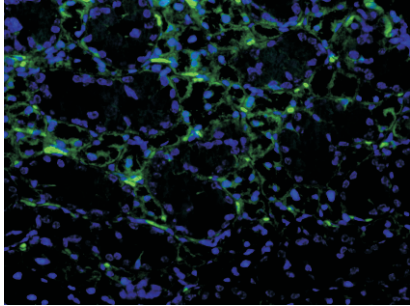
## Anti-SDHA Rabbit pAb



WLR128

For Research Use Only. Not For Use In Diagnostic Procedures

### Product Information



#### Immunofluorescence-Anti-SDHA pAb

Immunofluorescence analysis of paraffin-embedded mouse salivary gland using anti-SDHA Rabbit Antibody at 1:100 dilution.

Perform heat mediated antigen retrieval with Tris-EDTA buffer pH 9.0