

Anti-UQCRC2 Rabbit pAb



WLR0116

For Research Use Only. Not For Use In Diagnostic Procedures

Product Information

Product name	Anti-UQCRC2 Rabbit pAb	
Source	Rabbit	
Species reactivity	Human, Mouse, Rat	
Tested applications	WB	1:500-1:1000
	IHC	1:100-1:200
Cellular localization	Mitochondrion inner membrane.	
Pack size	50/100/200/500/1000μl	
Storage	Store at -20°C. Avoid freeze/thaw cycles.	
Storage buffer	Supplied in 20 mM phosphate (pH 7.5), 150 mM NaCl, 100 μg/ml	
	BSA, 50% glycerol and less than 0.02% sodium azide	

General Information

Background	UQCRC2 (ubiquitin cytochrome c reductase complex core protein 2) is a component of the ubiquitin cytochrome c reductase complex (complex III or cytochrome b-c1 complex) and is a multi subunit transmembrane complex. UQCRC2 is a part of the mitochondrial electron transport chain that drives oxidative phosphorylation.
Immunogen	Polyclonal antibody is produced by immunizing animals with a synthetic peptide of UQCRC2.
Purification	Polyclonal antibody was purified by immunogen affinity chromatography.

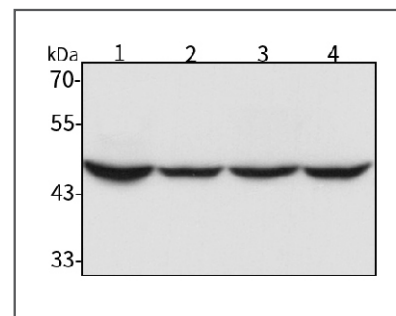
Anti-UQCRC2 Rabbit pAb



WLR0116

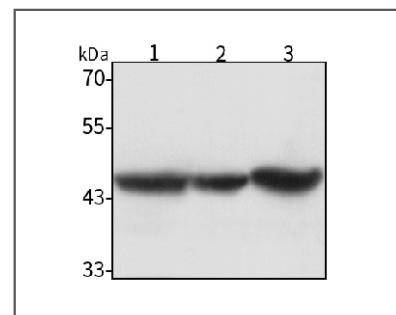
For Research Use Only. Not For Use In Diagnostic Procedures

Product Images



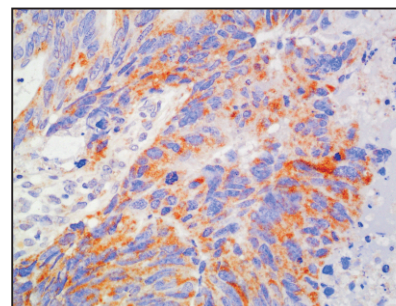
Western blot-Anti-UQCRC2 pAb

Lane 1: Human HCT116 cell lysate
 Lane 2: Human MDA-MB-231 cell lysate
 Lane 3: Human A549 cell lysate
 Lane 4: Human HUVEC cell lysate
 All lanes: Anti-UQCRC2 at 1:1000 dilution
 Lysates/proteins at 20-50 μg per lane
 Predicted band size: 48 kDa
 Observed band size: 48 kDa



Western blot-Anti-UQCRC2 pAb

Lane 1: Mouse liver tissue lysate
 Lane 2: Rat lung tissue lysate
 Lane 3: Rat stomach tissue lysate
 All lanes: Anti-UQCRC2 at 1:1000 dilution
 Lysates/proteins at 20-50 μg per lane
 Predicted band size: 48 kDa
 Observed band size: 48 kDa



Immunohistochemistry-Anti-UQCRC2 pAb

Immunohistochemical analysis of paraffin-embedded human colon cancer using anti-UQCRC2 Rabbit Antibody at 1:100 dilution.
 Perform heat mediated antigen retrieval with Tris-EDTA buffer pH 9.0

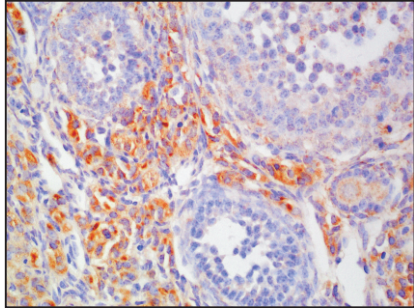


Anti-UQCRC2 Rabbit pAb

WL0R0116

For Research Use Only. Not For Use In Diagnostic Procedures

Product Information



Immunohistochemistry-Anti-UQCRC2 pAb

Immunohistochemical analysis of paraffin-embedded mouse ovary using anti-UQCRC2 Rabbit Antibody at 1:100 dilution.

Perform heat mediated antigen retrieval with Tris-EDTA buffer pH 9.0