

Anti-TAK1 Rabbit pAb



WLA0308

For Research Use Only. Not For Use In Diagnostic Procedures

Product Information

Product name	Anti-TAK1 Rabbit pAb	
Source	Rabbit	
Species reactivity	Human, Mouse, Rat	
Tested applications	WB	1:500-1:1000
	IHC, IF	1:100-1:200
Cellular localization	Cell membrane. Cytoplasm.	
Pack size	50/100/200/500/1000μl	
Storage	Store at -20°C. <b>Avoid freeze/thaw cycles.</b>	
Storage buffer	Supplied in 20 mM phosphate (pH 7.5), 150 mM NaCl, 100 μg/ml	
	BSA, 50% glycerol and less than 0.02% sodium azide	

General Information

Background	MAP3K7 (mitogen activated protein kinase kinase 7), also known as TAK1, belongs to the MAP kinase kinase subfamily and is a component of the protein kinase signaling cascade. This kinase mediates TGF β - and morphogenetic protein (BMP) - induced signal transduction and controls various cellular functions, including transcriptional regulation and apoptosis. It responds to TRAF6 signaling to activate IKBKB and MAPK8, stimulating NF-KAPPA-B activation and p38 MAPK pathway.
Immunogen	Polyclonal antibody is produced by immunizing animals with a synthetic peptide of TAK1.
Purification	Polyclonal antibody was purified by immunogen affinity chromatography.

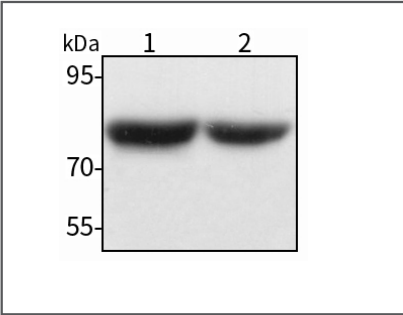
Anti-TAK1 Rabbit pAb



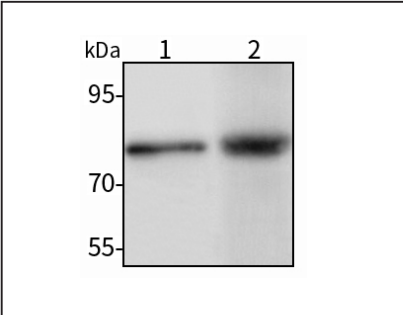
WLA0308

For Research Use Only. Not For Use In Diagnostic Procedures

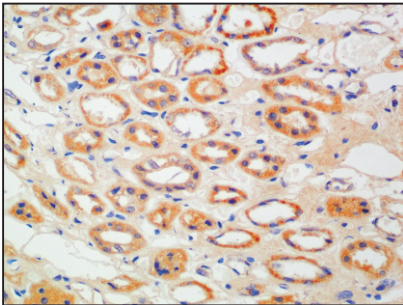
Product Images



**Western blot-Anti-TAK1 pAb**  
Lane 1: Human Hela cell lysate  
Lane 2: Human HEK293 cell lysate  
All lanes: Anti-TAK1 at 1:1000 dilution  
Lysates/proteins at 20-50 μg per lane  
Predicted band size: 67 kDa  
Observed band size: 75 kDa



**Western blot-Anti-TAK1 pAb**  
Lane 1: Mouse kidney tissue lysate  
Lane 2: Rat heart tissue lysate  
All lanes: Anti-TAK1 at 1:1000 dilution  
Lysates/proteins at 20-50 μg per lane  
Predicted band size: 67 kDa  
Observed band size: 75 kDa



**Immunohistochemistry-Anti-TAK1 pAb**  
Immunohistochemical analysis of paraffin-embedded human kidney cancer using anti-TAK1 Rabbit Antibody at 1:100 dilution. Perform heat mediated antigen retrieval with Tris-EDTA buffer pH 9.0

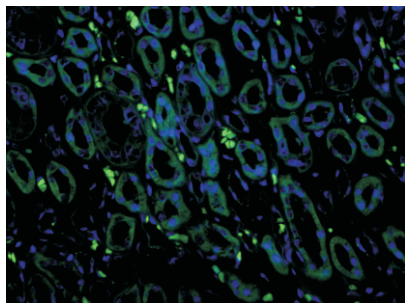
## Anti-TAK1 Rabbit pAb



WLA0308

For Research Use Only. Not For Use In Diagnostic Procedures

### Product Information



#### Immunofluorescence-Anti-TAK1 pAb

Immunofluorescence analysis of paraffin-embedded human kidney cancer using anti-TAK1 Rabbit Antibody at 1:100 dilution.

Perform heat mediated antigen retrieval with Tris-EDTA buffer pH 9.0