

Anti-ELK4 Rabbit pAb



WL05157

For Research Use Only. Not For Use In Diagnostic Procedures

Product Information

Product name	Anti-ELK4 Rabbit pAb	
Source	Rabbit	
Species reactivity	Human, Mouse, Rat	
Tested applications	WB	1:1000-1:2000
	IHC	1:100-1:500
Cellular localization	Nucleus.	
Pack size	50/100/200/500/1000μl	
Storage	Store at -20°C. Avoid freeze/thaw cycles.	
Storage buffer	Supplied in 20 mM phosphate (pH 7.5), 150 mM NaCl, 100 μg/ml	
	BSA, 50% glycerol and less than 0.02% sodium azide	

General Information

Background	ELK4, also named as SAP1, SAP-1 and SAP1, belongs to the ETS family. It forms a ternary complex with the serum response factor (SRF). ELK4 requires DNA-bound SRF for ternary complex formation and makes extensive DNA contacts to the 5' side of SRF, but does not bind DNA autonomously. It is androgen regulated, involved in promoting cell growth.
Immunogen	Polyclonal antibody is produced by immunizing animals with a synthetic peptide of ELK4.
Purification	Polyclonal antibody was purified by Protein A affinity chromatography.

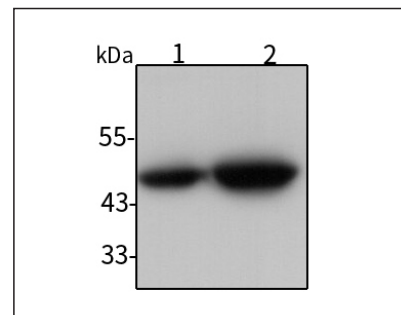
Anti-ELK4 Rabbit pAb



WL05157

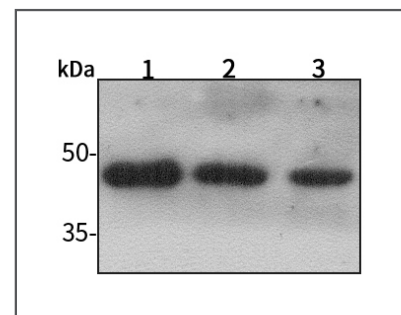
For Research Use Only. Not For Use In Diagnostic Procedures

Product Images



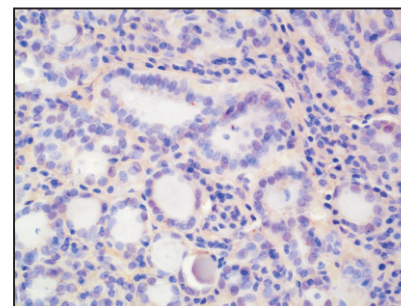
Western blot-Anti-ELK4 pAb

Lane 1: Human A549 cell lysate
 Lane 2: Human HUVEC cell lysate
 All lanes: Anti-ELK4 at 1:1000 dilution
 Lysates/proteins at 20-50 μg per lane.
 Predicted band size: 47 kDa
 Observed band size: 47 kDa



Western blot-Anti-ELK4 pAb

Lane 1: Mouse heart tissue lysate
 Lane 2: Rat heart tissue lysate
 Lane 3: Rat liver tissue lysate
 All lanes: Anti-ELK4 at 1:1000 dilution
 Lysates/proteins at 20-50 μg per lane.
 Predicted band size: 47 kDa
 Observed band size: 47 kDa



Immunohistochemistry-Anti-ELK4 pAb

Immunohistochemical analysis of paraffin-embedded human thyroid cancer using anti-ELK4 Rabbit Antibody at 1:200 dilution.
 Perform heat mediated antigen retrieval with Tris-EDTA buffer pH 9.0

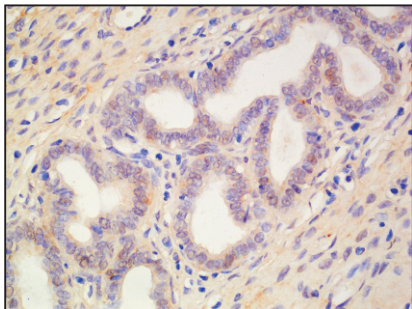


Anti-ELK4 Rabbit pAb

WL05157

For Research Use Only. Not For Use In Diagnostic Procedures

Product Information



Immunohistochemistry-Anti-ELK4 pAb

Immunohistochemical analysis of paraffin-embedded rat uterus using anti-ELK4 Rabbit Antibody at 1:200 dilution.

Perform heat mediated antigen retrieval with Tris-EDTA buffer pH 9.0