

Anti-ABCB11/BSEP Rabbit pAb



WL02522

For Research Use Only. Not For Use In Diagnostic Procedures

Product Information

Product name	Anti-ABCB11/BSEP Rabbit pAb	
Source	Rabbit	
Species reactivity	Human, Mouse, Rat	
Tested applications	WB	1:1000-1:2000
	IHC, IF	1:200-1:500
Cellular localization	Membrane.	
Pack size	50/100/200/500/1000μl	
Storage	Store at -20°C. Avoid freeze/thaw cycles.	
Storage buffer	Supplied in 20 mM phosphate (pH 7.5), 150 mM NaCl, 100 μg/ml	
	BSA, 50% glycerol and less than 0.02% sodium azide	

General Information

Background	This protein is a member of the MDR/TAP subfamily. Members of the MDR/TAP subfamily are involved in multidrug resistance. The protein encoded by this gene is the major canalicular bile salt export pump in man. Mutations in this gene cause a form of progressive familial intrahepatic cholestases which are a group of inherited disorders with severe cholestatic liver disease from early infancy.
Immunogen	Polyclonal antibody is produced by immunizing animals with a synthetic peptide of ABCB11/BSEP.
Purification	Polyclonal antibody was purified by Protein A affinity chromatography.

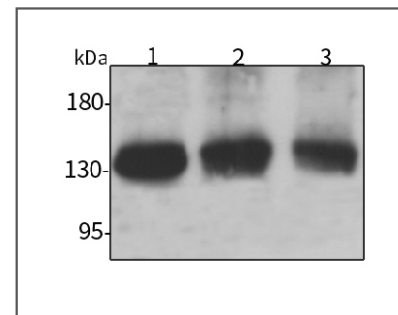
Anti-ABCB11/BSEP Rabbit pAb



WL02522

For Research Use Only. Not For Use In Diagnostic Procedures

Product Images



Western blot-Anti-ABCB11/BSEP pAb

Lane 1: Human MDA-MB-231 cell lysate

Lane 2: Human A549 cell lysate

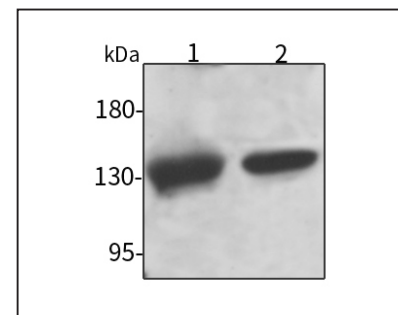
Lane 3: Human HUVEC cell lysate

All lanes: Anti-ABCB11/BSEP at 1:1000 dilution

Lysates/proteins at 20-50 μg per lane

Predicted band size: 146 kDa

Observed band size: 130 kDa



Western blot-Anti-ABCB11/BSEP pAb

Lane 1: Mouse liver tissue lysate

Lane 2: Rat liver tissue lysate

All lanes: Anti-ABCB11/BSEP at 1:1000 dilution

Lysates/proteins at 20-50 μg per lane

Predicted band size: 146 kDa

Observed band size: 130 kDa