

Anti-LMX1b Rabbit pAb



WL05144

For Research Use Only. Not For Use In Diagnostic Procedures

Product Information

Product name	Anti-LMX1b Rabbit pAb	
Source	Rabbit	
Species reactivity	Human, Mouse, Rat	
Tested applications	WB	1:500-1:1000
	IHC	1:50-1:200
Cellular localization	Nucleus.	
Pack size	50/100/200/500/1000μl	
Storage	Store at -20°C. Avoid freeze/thaw cycles.	
Storage buffer	Supplied in 20 mM phosphate (pH 7.5), 150 mM NaCl, 100 μg/ml	
	BSA, 50% glycerol and less than 0.02% sodium azide	

General Information

Background	LMX1b encodes a member of LIM-homeodomain family of proteins containing two N-terminal zinc-binding LIM domains, 1 homeodomain, and a C-terminal glutamine-rich domain. It functions as a transcription factor, and is essential for the normal development of dorsal limb structures, the glomerular basement membrane, the anterior segment of the eye, and dopaminergic and serotonergic neurons.
Immunogen	Polyclonal antibody is produced by immunizing animals with a synthetic peptide of LMX1b.
Purification	Polyclonal antibody was purified by immunogen affinity chromatography.

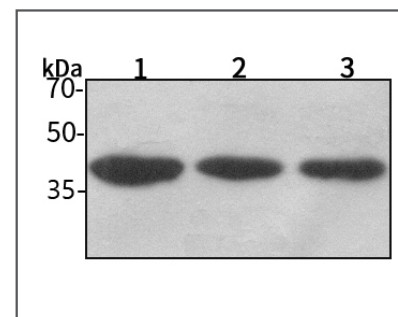
Anti-LMX1b Rabbit pAb



WL05144

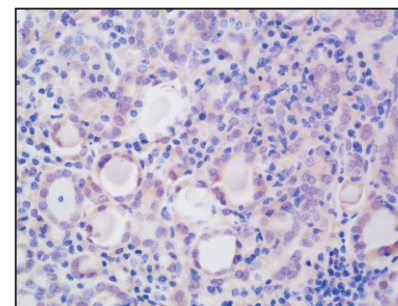
For Research Use Only. Not For Use In Diagnostic Procedures

Product Images



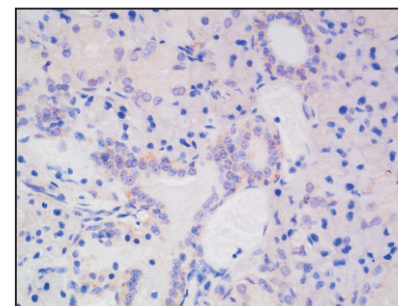
Western blot-Anti-LMX1b pAb

Lane 1: Human MCF-7 cell lysate
 Lane 2: Human HEK-293 cell lysate
 Lane 3: Human HUVEC cell lysate
 All lanes: Anti-LMX1b at 1:1000 dilution
 Lysates/proteins at 20-50 μg per lane.
 Predicted band size: 42 kDa
 Observed band size: 42 kDa



Immunohistochemistry-Anti-LMX1b pAb

Immunohistochemical analysis of paraffin-embedded human thyroid cancer using anti-LMX1b Rabbit Antibody at 1:100 dilution.
 Perform heat mediated antigen retrieval with Tris-EDTA buffer pH 9.0



Immunohistochemistry-Anti-LMX1b pAb

Immunohistochemical analysis of paraffin-embedded mouse salivary gland using anti-LMX1b Rabbit Antibody at 1:100 dilution.
 Perform heat mediated antigen retrieval with Tris-EDTA buffer pH 9.0

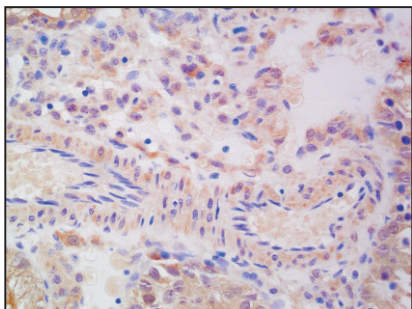


Anti-LMX1b Rabbit pAb

WL05144

For Research Use Only. Not For Use In Diagnostic Procedures

Product Information



Immunohistochemistry-Anti-LMX1b pAb

Immunohistochemical analysis of paraffin-embedded rat testis using anti-LMX1b Rabbit Antibody at 1:100 dilution.

Perform heat mediated antigen retrieval with Tris-EDTA buffer pH 9.0