

Anti-Haptoglobin β Rabbit pAb



WL02466

For Research Use Only. Not For Use In Diagnostic Procedures

Product Information

Product name	Anti-Haptoglobin β Rabbit pAb	
Source	Rabbit	
Species reactivity	Human, Mouse, Rat	
Tested applications	WB	1:1000-1:2000
	IHC	1:300
Cellular localization	Secreted	
Pack size	50/100/200/500/1000μl	
Storage	Store at -20°C. Avoid freeze/thaw cycles.	
Storage buffer	Supplied in 20 mM phosphate (pH 7.5), 150 mM NaCl, 100 μg/ml	
	BSA, 50% glycerol and less than 0.02% sodium azide	

General Information

Background	Haptoglobin (Hp) is a blood plasma protein that functions to bind free Hemoglobin that has been released from erythrocytes, thereby inhibiting its oxidative activity. The protein encoded also exhibits antimicrobial activity against bacteria. A similar duplicated gene is located next to this gene on chromosome 16. Multiple transcript variants encoding different isoforms have been found for this gene. Haptoglobin levels are useful in diagnosing hemolytic anemia, the abnormal breakdown of red blood cells.
Immunogen	Polyclonal antibody is produced by immunizing animals with a synthetic peptide of Haptoglobin β.
Purification	Polyclonal antibody was purified by Protein A affinity chromatography.

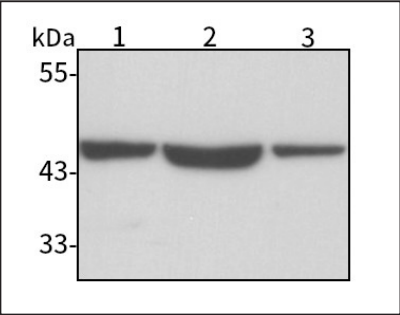
Anti-Haptoglobin β Rabbit pAb



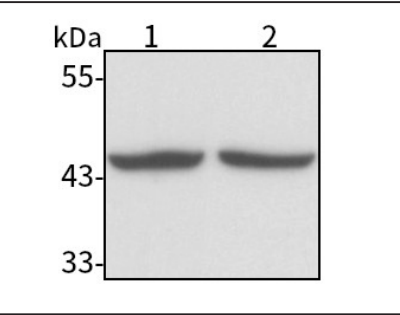
WL02466

For Research Use Only. Not For Use In Diagnostic Procedures

Product Images



Western blot-Anti-Haptoglobin β pAb
Lane 1: Human HL-60 cell lysate
Lane 2: Human Hep-G2 cell lysate
Lane 3: Human HuH-7 cell lysate
All lanes: Anti-Haptoglobin β at 1:1000 dilution
Lysates/proteins at 20-50 μg per lane.
Predicted band size: 43 kDa
Observed band size: 45 kDa



Western blot-Anti-Haptoglobin β pAb
Lane 1: Mouse liver tissue lysate
Lane 2: Rat liver tissue lysate
All lanes: Anti-Haptoglobin β at 1:1000 dilution
Lysates/proteins at 20-50 μg per lane.
Predicted band size: 43 kDa
Observed band size: 45 kDa