

Anti-TSG101 Rabbit pAb



WL05130

For Research Use Only. Not For Use In Diagnostic Procedures

Product Information

Product name	Anti-TSG101 Rabbit pAb	
Source	Rabbit	
Species reactivity	Human, Mouse, Rat	
Tested applications	WB	1:500-1:1000
	IHC, IF	1:50-1:200

Cellular localization Cytoplasm. Membrane. Nucleus.

Molecular Wt. 44 kDa

Pack size 50/100/200/500/1000μl

Storage Store at -20°C. **Avoid freeze/thaw cycles.**

Storage buffer Supplied in 20 mM phosphate (pH 7.5), 150 mM NaCl, 100 μg/ml BSA, 50% glycerol and less than 0.02% sodium azide

General Information

Background TSG101(Tumor susceptibility gene 101 protein) is essential for endosomal sorting, membrane receptor degradation and the final stages of cytokinesis. It plays a crucial role for cell proliferation and cell survival. TSG101 has been identified as a candidate tumor suppressor gene and belongs to the ubiquitin-conjugating enzyme family. TSG101 is a marker for exosome.

Immunogen Polyclonal antibody is produced by immunizing animals with a synthetic peptide of TSG101.

Purification Polyclonal antibody was purified by immunogen affinity chromatography.

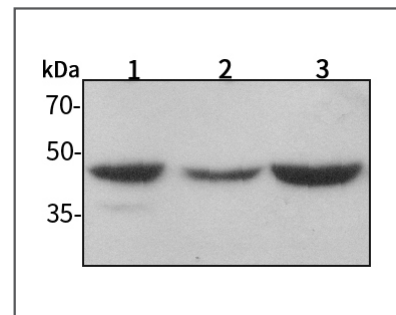
Anti-TSG101 Rabbit pAb



WL05130

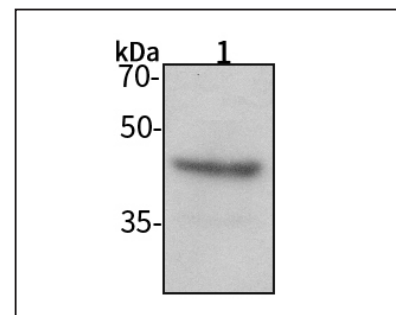
For Research Use Only. Not For Use In Diagnostic Procedures

Product Images



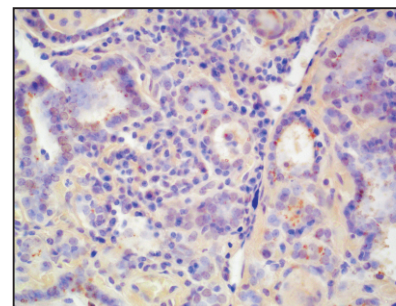
Western blot-Anti-TSG101 pAb

Lane 1: Human MCF-7 cell lysate 20μg
 Lane 2: Human HEK-293 cell lysate 20μg
 Lane 3: Human HUVEC cell lysate 20μg
Separation gel: 10% polyacrylamide
Electrophoresis: 100V, 4°C, 3h
Transmembrane: 100V, 4°C, 1h
Blocking: 5% w/v nonfat dry milk, 1× TBST, at RT with gentle shaking
Primary antibody: 1:1000 in blocking buffer, 4°C, overnight
Secondary antibody (WLA023a) : 1:5000-1:10000, 45min
Detection: ECL, 30s-2min



Western blot-Anti-TSG101 pAb

Lane 1: Mouse heart tissue lysate 10μg
Separation gel: 10% polyacrylamide
Electrophoresis: 100V, 4°C, 3h
Transmembrane: 100V, 4°C, 1h
Blocking: 5% w/v nonfat dry milk, 1× TBST, at RT with gentle shaking
Primary antibody: 1:1000 in blocking buffer, 4°C, overnight
Secondary antibody (WLA023a) : 1:5000-1:10000, 45min
Detection: ECL, 30s-2min



Immunohistochemistry-Anti-TSG101 pAb

Immunohistochemical analysis of paraffin-embedded human thyroid cancer using anti-TSG101 Rabbit Antibody at 1:100 dilution. Perform heat mediated antigen retrieval with Tris-EDTA buffer pH 9.0

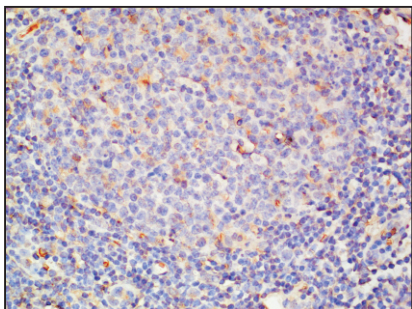
Anti-TSG101 Rabbit pAb



WL05130

For Research Use Only. Not For Use In Diagnostic Procedures

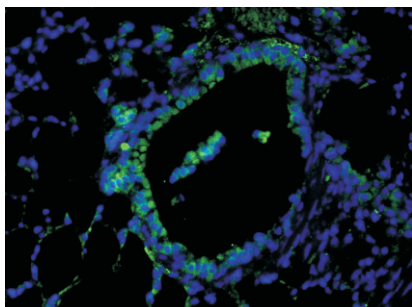
Product Information



Immunohistochemistry-Anti-TSG101 pAb

Immunohistochemical analysis of paraffin-embedded mouse lymph gland using anti-TSG101 Rabbit Antibody at 1:100 dilution.

Perform heat mediated antigen retrieval with Tris-EDTA buffer pH 9.0



Immunofluorescence-Anti-TSG101 pAb

Immunofluorescence analysis of paraffin-embedded mouse lung using anti-TSG101 Rabbit Antibody at 1:100 dilution.

Perform heat mediated antigen retrieval with Tris-EDTA buffer pH 9.0