

## Anti-Phospholipase D1 Rabbit pAb



WL05225

For Research Use Only. Not For Use In Diagnostic Procedures

## Product Information

**Product name** Anti-Phospholipase D1 Rabbit pAb**Source** Rabbit**Species reactivity** Human, Mouse, Rat

**Tested applications**

WB	1:500-1:1000
IHC	1:50-1:200

**Cellular localization** Cytoplasm.**Molecular Wt.** 120 kDa**Pack size** 50/100/200/500/1000µl**Storage** Store at -20°C. **Avoid freeze/thaw cycles.****Storage buffer** Supplied in 20 mM phosphate (pH 7.5), 150 mM NaCl, 100 µg/ml BSA, 50% glycerol and less than 0.02% sodium azide

## General Information

**Background**

PLD1 phosphatidylcholine-specific phospholipase which catalyzes the hydrolysis of phosphatidylcholine in order to yield phosphatidic acid and choline. The enzyme may play a role in signal transduction and subcellular trafficking. Alternative splicing results in multiple transcript variants with both catalytic and regulatory properties.

**Immunogen**

Polyclonal antibody is produced by immunizing animals with a synthetic peptide of Phospholipase D1.

**Purification**

Polyclonal antibody was purified by immunogen affinity chromatography.

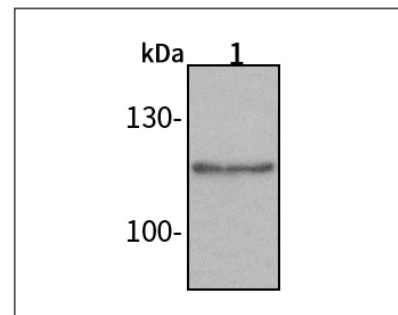
## Anti-Phospholipase D1 Rabbit pAb



WL05225

For Research Use Only. Not For Use In Diagnostic Procedures

## Product Images

**Western blot-Anti-Phospholipase D1 pAb**

Lane 1: Human HEK-293 cell lysate 20µg

Separation gel: 8% polyacrylamide

Electrophoresis: 100V, 4°C, 3h

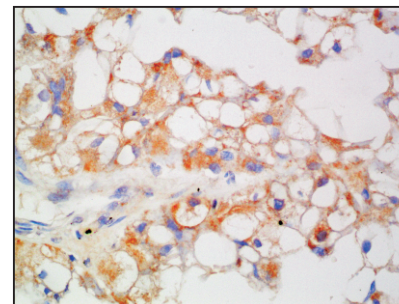
Transmembrane: 100V, 4°C, 1h

Blocking: 5% w/v nonfat dry milk, 1 × TBST, at RT with gentle shaking

Primary antibody: 1:1000 in blocking buffer, 4°C, overnight

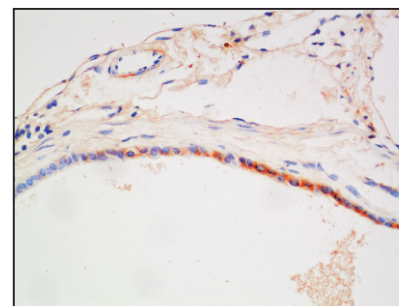
Secondary antibody (WLA023a) : 1:5000-1:10000, 45min

Detection: ECL, 30s-2min

**Immunohistochemistry-Anti-Phospholipase D1 pAb**

Immunohistochemical analysis of paraffin-embedded human renal clear cell carcinoma using anti-Phospholipase D1 Rabbit Antibody at 1:100 dilution.

Perform heat mediated antigen retrieval with Tris-EDTA buffer pH 9.0

**Immunohistochemistry-Anti-Phospholipase D1 pAb**

Immunohistochemical analysis of paraffin-embedded mouse gallbladder using anti-Phospholipase D1 Rabbit Antibody at 1:100 dilution.

Perform heat mediated antigen retrieval with Tris-EDTA buffer pH 9.0