

Anti-DACH1 Rabbit pAb



WL04747

For Research Use Only. Not For Use In Diagnostic Procedures

Product Information

Product name	Anti-DACH1 Rabbit pAb		
Source	Rabbit		
Species reactivity	Human, Mouse, Rat		
Tested applications	WB	1:1000-1:2000	
Pack size	50/100/200/500/1000µl		
Storage	Store at -20°C. Avoid freeze/thaw cycles.		
Storage buffer	Supplied in 20 mM phosphate (pH 7.5), 150 mM NaCl, 100 µg/ml BSA, 50% glycerol and less than 0.02% sodium azide		

General Information

Background	DACH1, a homologue of the Drosophila dachshund gene, is a key regulator of cell fate determination during eye, leg, and brain development in the fly. Through interacting with NCoR and Smad4, DACH1 is able to inhibit the transforming growth factor-beta (TGF-beta) signaling pathway. DACH1 can inhibit breast cancer cellular proliferation via cyclin D1, suggesting a possible role in tumor suppression.
-------------------	--

Immunogen	Polyclonal antibody is produced by immunizing animals with a synthetic peptide of DACH1.
------------------	--

Purification	Polyclonal antibody was purified by Protein A affinity chromatography.
---------------------	--

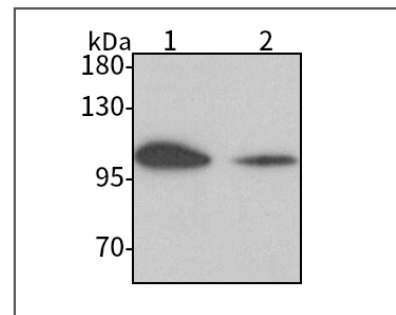
Anti-DACH1 Rabbit pAb



WL04747

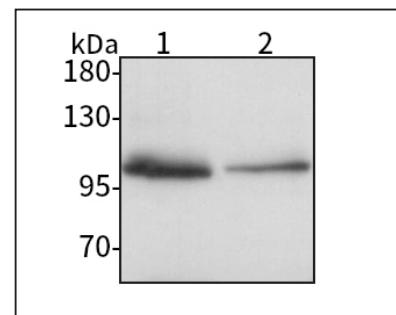
For Research Use Only. Not For Use In Diagnostic Procedures

Product Images



Western blot-Anti-DACH1 pAb

Lane 1: Human HEK293 cell lysate
 Lane 2: Human MCF-7 cell lysate
 All lanes: Anti-DACH1 at 1:1000 dilution
 Lysates/proteins at 20-50 µg per lane.
 Predicted band size: 79 kDa
 Observed band size: 97-110 kDa



Western blot-Anti-DACH1 pAb

Lane 1: Mouse kidney tissue lysate
 Lane 2: Rat colon tissue lysate
 All lanes: Anti-DACH1 at 1:1000 dilution
 Lysates/proteins at 20-50 µg per lane.
 Predicted band size: 79 kDa
 Observed band size: 97-110 kDa