



Anti-ACE/angiotensin I converting enzyme Rabbit pAb

WLH4265

For Research Use Only. Not For Use In Diagnostic Procedures

Product Information

Product name	Anti-ACE/angiotensin I converting enzyme Rabbit pAb	
Source	Rabbit	
Species reactivity	Human, Mouse, Rat, Rabbit	
Tested applications	IHC	1:200-1:400
	IF	1:200
Cellular localization	Cell membrane. Cytoplasm. Secreted.	
Pack size	50/100/200/500/1000μl	
Storage	Store at -20°C. Avoid freeze/thaw cycles.	
Storage buffer	Supplied in 20 mM phosphate (pH 7.5), 150 mM NaCl, 100 μg/ml	
	BSA, 50% glycerol and less than 0.02% sodium azide	

General Information

Background	ACE (angiotensin-converting enzyme), also known as DCP or DCP1, belongs to the peptidase M2 family. It is an enzyme involved in catalyzing the conversion of angiotensin I into the physiologically active peptide angiotensin II. This enzyme plays a crucial role in the renin-angiotensin system. ACE also has glycosidase activity, releasing GPI anchored proteins from the membrane by cleaving the mannose bond in the GPI portion.
Immunogen	Polyclonal antibody is produced by immunizing animals with a synthetic peptide of ACE/angiotensin I converting enzyme.
Purification	Polyclonal antibody was purified by immunogen affinity chromatography.

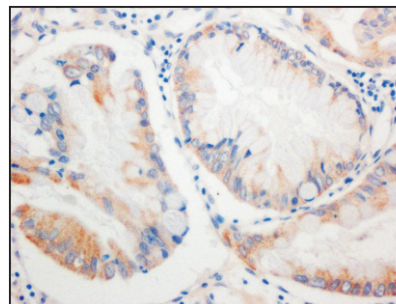


Anti-ACE/angiotensin I converting enzyme Rabbit pAb

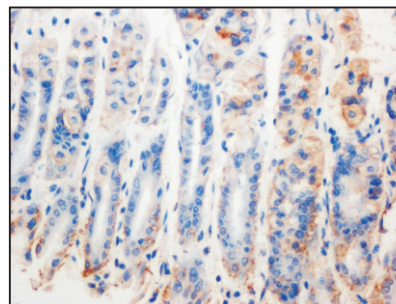
WLH4265

For Research Use Only. Not For Use In Diagnostic Procedures

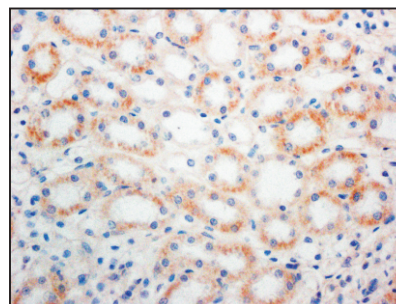
Product Images



Immunohistochemistry-Anti-ACE/angiotensin I converting enzyme pAb
Immunohistochemical analysis of paraffin-embedded human colon cancer using anti-ACE/angiotensin I converting enzyme Rabbit Antibody at 1:200 dilution.
Perform heat mediated antigen retrieval with Tris-EDTA buffer pH 9.0



Immunohistochemistry-Anti-ACE/angiotensin I converting enzyme pAb
Immunohistochemical analysis of paraffin-embedded mouse stomach using anti-ACE/angiotensin I converting enzyme Rabbit Antibody at 1:200 dilution.
Perform heat mediated antigen retrieval with Tris-EDTA buffer pH 9.0



Immunohistochemistry-Anti-ACE/angiotensin I converting enzyme pAb
Immunohistochemical analysis of paraffin-embedded rat kidney using anti-ACE/angiotensin I converting enzyme Rabbit Antibody at 1:200 dilution.
Perform heat mediated antigen retrieval with Tris-EDTA buffer pH 9.0

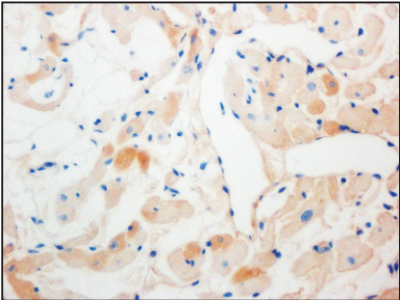


Anti-ACE/angiotensin I converting enzyme Rabbit pAb

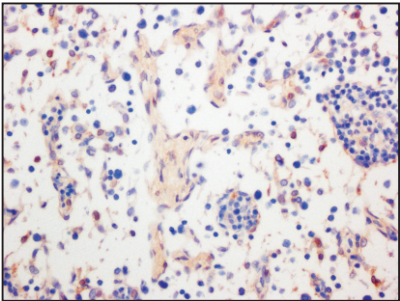
WLH4265

For Research Use Only. Not For Use In Diagnostic Procedures

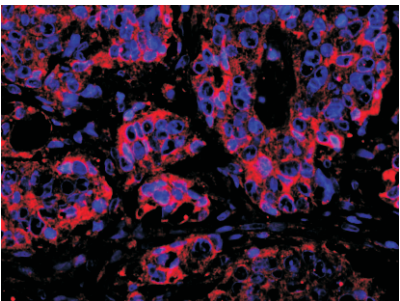
Product Information



Immunohistochemistry-Anti-ACE/angiotensin I converting enzyme pAb
Immunohistochemical analysis of paraffin-embedded rabbit heart using anti-ACE/angiotensin I converting enzyme Rabbit Antibody at 1:200 dilution.
Perform heat mediated antigen retrieval with Tris-EDTA buffer pH 9.0



Immunohistochemistry-Anti-ACE/angiotensin I converting enzyme pAb
Immunohistochemical analysis of paraffin-embedded rabbit thymus using anti-ACE/angiotensin I converting enzyme Rabbit Antibody at 1:200 dilution.
Perform heat mediated antigen retrieval with Tris-EDTA buffer pH 9.0



Immunofluorescence-Anti-ACE/angiotensin I converting enzyme pAb
Immunofluorescence analysis of paraffin-embedded human liver cancer using anti-ACE/angiotensin I converting enzyme Rabbit Antibody at 1:200 dilution.
Perform heat mediated antigen retrieval with Tris-EDTA buffer pH 9.0

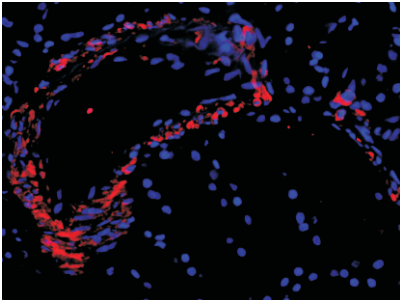


Anti-ACE/angiotensin I converting enzyme Rabbit pAb

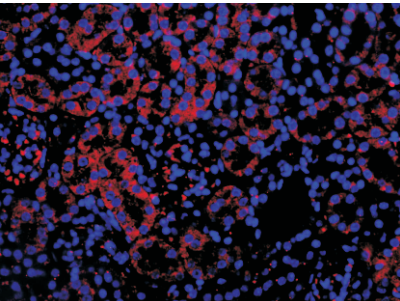
WLH4265

For Research Use Only. Not For Use In Diagnostic Procedures

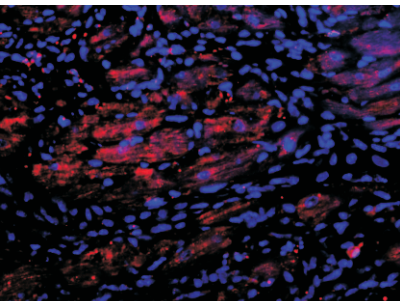
Product Information



Immunofluorescence-Anti-ACE/angiotensin I converting enzyme pAb
Immunofluorescence analysis of paraffin-embedded human kidney using anti-ACE/angiotensin I converting enzyme Rabbit Antibody at 1:200 dilution.
Perform heat mediated antigen retrieval with Tris-EDTA buffer pH 9.0



Immunofluorescence-Anti-ACE/angiotensin I converting enzyme pAb
Immunofluorescence analysis of paraffin-embedded mouse kidney using anti-ACE/angiotensin I converting enzyme Rabbit Antibody at 1:200 dilution.
Perform heat mediated antigen retrieval with Tris-EDTA buffer pH 9.0



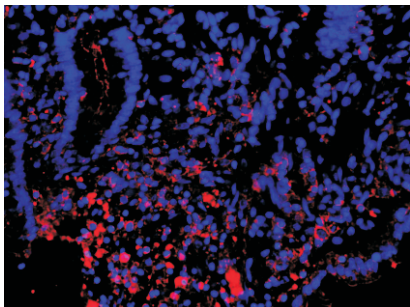
Immunofluorescence-Anti-ACE/angiotensin I converting enzyme pAb
Immunofluorescence analysis of paraffin-embedded mouse heart using anti-ACE/angiotensin I converting enzyme Rabbit Antibody at 1:200 dilution.
Perform heat mediated antigen retrieval with Tris-EDTA buffer pH 9.0

Anti-ACE/angiotensin I converting enzyme Rabbit pAb

WLH4265

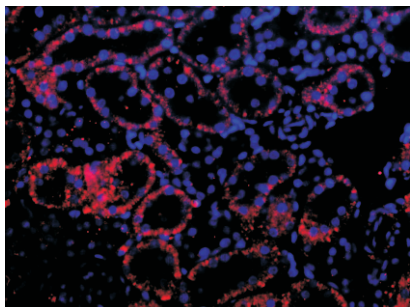
For Research Use Only. Not For Use In Diagnostic Procedures

Product Information



Immunofluorescence-Anti-ACE/angiotensin I converting enzyme pAb

Immunofluorescence analysis of paraffin-embedded rat colon using anti-ACE/angiotensin I converting enzyme Rabbit Antibody at 1:200 dilution.
Perform heat mediated antigen retrieval with Tris-EDTA buffer pH 9.0



Immunofluorescence-Anti-ACE/angiotensin I converting enzyme pAb

Immunofluorescence analysis of paraffin-embedded rat kidney using anti-ACE/angiotensin I converting enzyme Rabbit Antibody at 1:200 dilution.
Perform heat mediated antigen retrieval with Tris-EDTA buffer pH 9.0