



## Anti-ACE/angiotensin I converting enzyme Rabbit pAb

WL05771

For Research Use Only. Not For Use In Diagnostic Procedures

## Product Information

<b>Product name</b>	Anti-ACE/angiotensin I converting enzyme Rabbit pAb	
<b>Source</b>	Rabbit	
<b>Species reactivity</b>	Human, Mouse, Rat	
<b>Tested applications</b>	WB	1:1000-1:2000
	IHC, IF	1:200-1:500
<b>Cellular localization</b>	Cell membrane. Cytoplasm. Secreted.	
<b>Pack size</b>	50/100/200/500/1000μl	
<b>Storage</b>	Store at -20°C. <b>Avoid freeze/thaw cycles.</b>	
<b>Storage buffer</b>	Supplied in 20 mM phosphate (pH 7.5), 150 mM NaCl, 100 μg/ml	
	BSA, 50% glycerol and less than 0.02% sodium azide	

## General Information

<b>Background</b>	ACE (angiotensin-converting enzyme), also known as DCP or DCP1, belongs to the peptidase M2 family. It is an enzyme involved in catalyzing the conversion of angiotensin I into the physiologically active peptide angiotensin II. This enzyme plays a crucial role in the renin-angiotensin system. ACE also has glycosidase activity, releasing GPI anchored proteins from the membrane by cleaving the mannose bond in the GPI portion.
<b>Immunogen</b>	Polyclonal antibody is produced by immunizing animals with a synthetic peptide of ACE/angiotensin I converting enzyme.
<b>Purification</b>	Polyclonal antibody was purified by Protein A affinity chromatography.

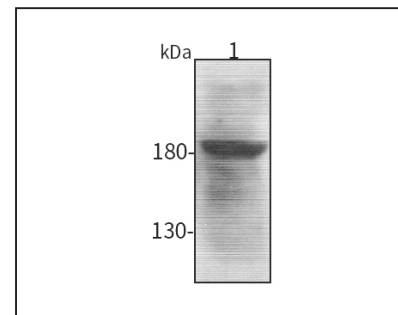


## Anti-ACE/angiotensin I converting enzyme Rabbit pAb

WL05771

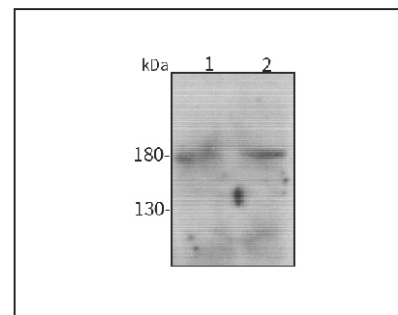
For Research Use Only. Not For Use In Diagnostic Procedures

## Product Images



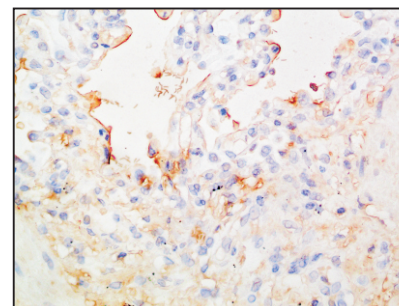
Western blot-Anti-ACE/angiotensin I converting enzyme pAb

**Lane 1:** Human HCT116 cell lysate  
**All lanes:** Anti-ACE/angiotensin I converting enzyme at 1:1000 dilution  
 Lysates/proteins at 20-50 μg per lane.  
 Predicted band size: 150 kDa  
 Observed band size: 180 kDa



Western blot-Anti-ACE/angiotensin I converting enzyme pAb

**Lane 1:** Mouse heart tissue lysate  
**Lane 2:** Rat kidney tissue lysate  
**All lanes:** Anti-ACE/angiotensin I converting enzyme at 1:1000 dilution  
 Lysates/proteins at 20-50 μg per lane.  
 Predicted band size: 150 kDa  
 Observed band size: 180 kDa



Immunohistochemistry-Anti-ACE/angiotensin I converting enzyme pAb

Immunohistochemical analysis of paraffin-embedded human lung cancer using anti-ACE/angiotensin I converting enzyme Rabbit Antibody at 1:200 dilution.  
 Perform heat mediated antigen retrieval with Tris-EDTA buffer pH 9.0

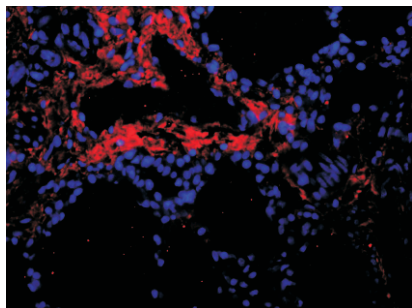


## Anti-ACE/angiotensin I converting enzyme Rabbit pAb

WL05771

For Research Use Only. Not For Use In Diagnostic Procedures

### Product Information



#### Immunofluorescence-Anti-ACE/angiotensin I converting enzyme pAb

Immunofluorescence analysis of paraffin-embedded rat lung using anti-ACE/angiotensin I converting enzyme Rabbit Antibody at 1:200 dilution. Perform heat mediated antigen retrieval with Tris-EDTA buffer pH 9.0