

Anti-Cadherin 16 Rabbit pAb



WL04863

For Research Use Only. Not For Use In Diagnostic Procedures

Product Information

Product name	Anti-Cadherin 16 Rabbit pAb	
Source	Rabbit	
Species reactivity	Human, Mouse, Rat	
Tested applications	WB	1:500-1:1000
	IHC	1:200
Cellular localization	Cell membrane	
Pack size	50/100/200/500/1000μl	
Storage	Store at -20°C. Avoid freeze/thaw cycles.	
Storage buffer	Supplied in 20 mM phosphate (pH 7.5), 150 mM NaCl, 100 μg/ml	
	BSA, 50% glycerol and less than 0.02% sodium azide	

General Information

Background	Cadherin-16 (CDH16), also known as kidney-specific cadherin (Ksp-cadherin), is a tissue-specific member of the cadherin family of adhesion molecules. It is a glycoprotein expressed by tubular epithelial cells in the kidney. Cadherins are calcium dependent cell adhesion proteins. They preferentially interact with themselves in a homophilic manner in connecting cells; cadherins may thus contribute to the sorting of heterogeneous cell types.
Immunogen	Polyclonal antibody is produced by immunizing animals with a synthetic peptide of Cadherin 16.
Purification	Polyclonal antibody was purified by innunogen affinity chromatography.

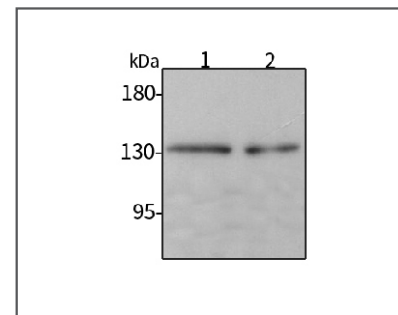
Anti-Cadherin 16 Rabbit pAb



WL04863

For Research Use Only. Not For Use In Diagnostic Procedures

Product Images



Western blot-Anti-Cadherin 16 pAb

Lane 1: Human Hela cell lysate

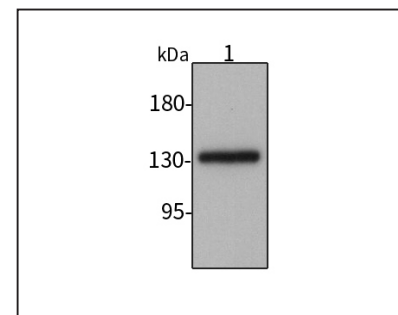
Lane 2: Human HEK-293 cell lysate

All lanes: Anti-Cadherin 16 at 1:1000 dilution

Lysates/proteins at 20-50 μg per lane.

Predicted band size: 90 kDa

Observed band size: 130 kDa



Western blot-Anti-Cadherin 16 pAb

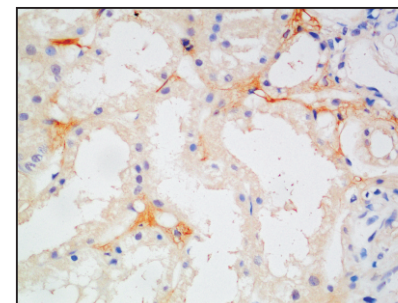
Lane 1: Mouse liver tissue lysate

All lanes: Anti-Cadherin 16 at 1:1000 dilution

Lysates/proteins at 20-50 μg per lane.

Predicted band size: 90 kDa

Observed band size: 130 kDa



Immunohistochemistry-Anti-Cadherin 16 pAb

Immunohistochemical analysis of paraffin-embedded human kidney using anti-Cadherin 16 Rabbit Antibody at 1:200 dilution.

Perform heat mediated antigen retrieval with Tris-EDTA buffer pH 9.0