

Anti-CCR2/CKR-2A Rabbit pAb



WL03663

For Research Use Only. Not For Use In Diagnostic Procedures

Product Information

Product name	Anti-CCR2/CKR-2A Rabbit pAb	
Source	Rabbit	
Species reactivity	Human, Mouse, Rat	
Tested applications	WB	1:1000-1:2000
	IHC	1:200
	IF	1:200
Cellular localization	Cell membrane	
Pack size	50/100/200/500/1000μl	
Storage	Store at -20°C. Avoid freeze/thaw cycles.	
Storage buffer	Supplied in 20 mM phosphate (pH 7.5), 150 mM NaCl, 100 μg/ml	
	BSA, 50% glycerol and less than 0.02% sodium azide	

General Information

Background	CCR2 is a member of the “CC-branch” of chemokine G protein-coupled receptors that regulate monocyte chemotaxis and T cell migration/activation and drive inflammation in a number of pathological conditions. Two isoforms of this receptor (CCR2A and CCR2B) are expressed on cell surfaces as a result of alternate splicing from the same gene. In addition, research studies have shown that CCR2 functions as an alternative coreceptor with CD4 for infection of some strains of HIV.
Immunogen	Polyclonal antibody is produced by immunizing animals with a synthetic peptide of CCR2/CKR-2A.
Purification	Polyclonal antibody was purified by Protein A affinity chromatography.

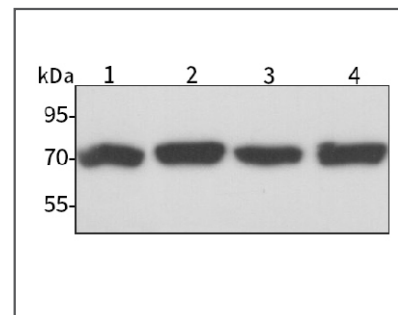
Anti-CCR2/CKR-2A Rabbit pAb



WL03663

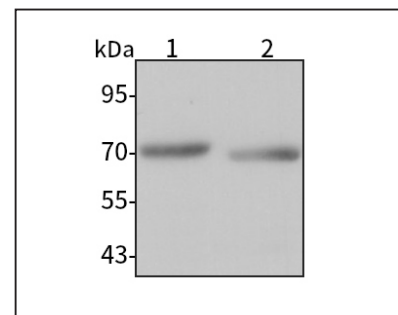
For Research Use Only. Not For Use In Diagnostic Procedures

Product Images



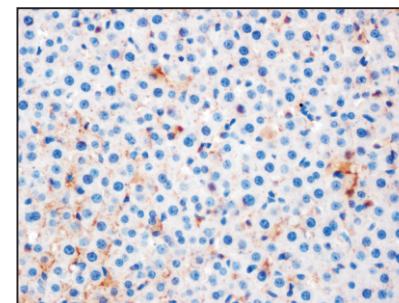
Western blot-Anti-CCR2/CKR-2A pAb

Lane 1: Human Hela cell lysate
 Lane 2: Human BGC-823 cell lysate
 Lane 3: Human MCF-7 cell lysate
 Lane 4: Human A549 cell lysate
 All lanes: Anti-CCR2/CKR-2A at 1:1000 dilution
 Lysates/proteins at 20-50 μg per lane.
 Predicted band size: 42 kDa
 Observed band size: 70 kDa



Western blot-Anti-CCR2/CKR-2A pAb

Lane 1: Mouse colon tissue lysate
 Lane 2: Rat stomach tissue lysate
 All lanes: Anti-CCR2/CKR-2A at 1:1000 dilution
 Lysates/proteins at 20-50 μg per lane.
 Predicted band size: 42 kDa
 Observed band size: 70 kDa



Immunohistochemistry-Anti-CCR2/CKR-2A pAb

Immunohistochemical analysis of paraffin-embedded rat liver using anti-CCR2/CKR-2A Rabbit Antibody at 1:200 dilution.
 Perform heat mediated antigen retrieval with Tris-EDTA buffer pH 9.0

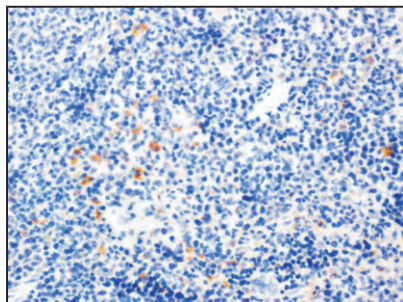
Anti-CCR2/CKR-2A Rabbit pAb



WL03663

For Research Use Only. Not For Use In Diagnostic Procedures

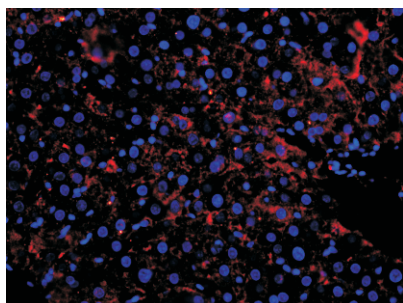
Product Information



Immunohistochemistry-Anti-CCR2/CKR-2A pAb

Immunohistochemical analysis of paraffin-embedded rat spleen using anti-CCR2/CKR-2A Rabbit Antibody at 1:200 dilution.

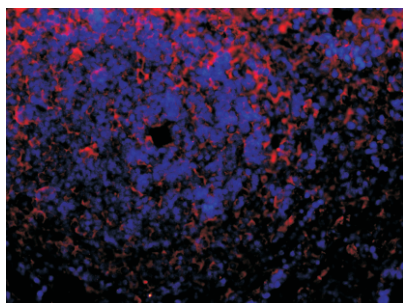
Perform heat mediated antigen retrieval with Tris-EDTA buffer pH 9.0



Immunofluorescence-Anti-CCR2/CKR-2A pAb

Immunofluorescence analysis of paraffin-embedded mouse liver using anti-CCR2/CKR-2A Rabbit Antibody at 1:200 dilution.

Perform heat mediated antigen retrieval with Tris-EDTA buffer pH 9.0



Immunofluorescence-Anti-CCR2/CKR-2A pAb

Immunofluorescence analysis of paraffin-embedded rat spleen using anti-CCR2/CKR-2A Rabbit Antibody at 1:200 dilution.

Perform heat mediated antigen retrieval with Tris-EDTA buffer pH 9.0