

Anti-CD62L Rabbit pAb



WL03745

For Research Use Only. Not For Use In Diagnostic Procedures

Product Information

| | | | |
|-----------------------|--|--------------|--|
| Product name | Anti-NOS2/INOS Rabbit pAb | | |
| Source | Rabbit | | |
| Species reactivity | Human, Mouse, Rat | | |
| Tested applications | WB | 1:500-1:1000 | |
| | IF | 1:200 | |
| Cellular localization | Secreted and Cell membrane | | |
| Pack size | 50/100/200/500/1000μl | | |
| Storage | Store at -20°C. Avoid freeze/thaw cycles. | | |
| Storage buffer | Supplied in 20 mM phosphate (pH 7.5), 150 mM NaCl, 100 μg/ml | | |
| | BSA, 50% glycerol and less than 0.02% sodium azide | | |

General Information

| | |
|--------------|---|
| Background | L-Selectin (also designated LECAM-1 or CD62L) is expressed on the majority of B and naive T cells and on most monocytes, neutrophils and eosinophils. L-Selectin interacts with specific carbohydrates expressed by activated endothelial cells. P-Selectin (also designated GMP-140 or CD62P), expressed on activated platelets and endothelial cells, and E-Selectin (also designated ELMA-1 or CD62E), expressed on endothelial cells, exhibit overlapping ligand specificities. |
| Immunogen | Polyclonal antibody is produced by immunizing animals with a synthetic peptide of CD62L. |
| Purification | Polyclonal antibody was purified by immunogen affinity chromatography. |

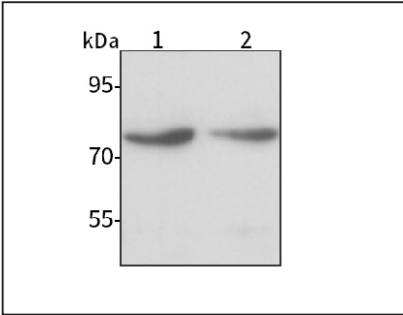
Anti-CD62L Rabbit pAb



WL03745

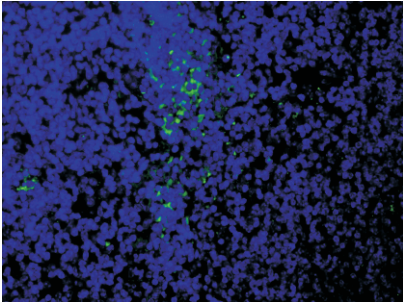
For Research Use Only. Not For Use In Diagnostic Procedures

Product Images



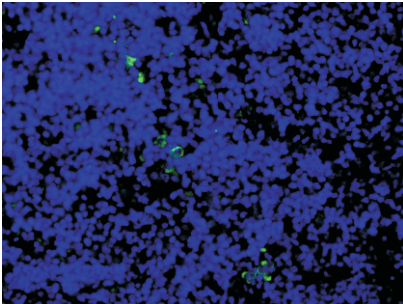
Western blot-Anti-CD62L pAb

Lane 1: Human Hela cell lysate
Lane 2: Human K562 cell lysate
All lanes: Anti-CD62L at 1:1000 dilution
Lysates/proteins at 20-50 μg per lane.
Predicted band size: 42 kDa
Observed band size: 74 kDa



Immunofluorescence-Anti-CD62L pAb

Immunofluorescence analysis of paraffin-embedded mouse thymus using anti-CD62L Rabbit Antibody at 1:200 dilution.
Perform heat mediated antigen retrieval with Tris-EDTA buffer pH 9.0



Immunofluorescence-Anti-CD62L pAb

Immunofluorescence analysis of paraffin-embedded rat spleen using anti-CD62L Rabbit Antibody at 1:200 dilution.
Perform heat mediated antigen retrieval with Tris-EDTA buffer pH 9.0