

Anti-eIF4B Rabbit pAb



WL04743

For Research Use Only. Not For Use In Diagnostic Procedures

Product Information

Product name	Anti-eIF4B Rabbit pAb		
Source	Rabbit		
Species reactivity	Human		
Tested applications	WB	1:500-1:1000	
Pack size	50/100/200/500/1000μl		
Storage	Store at -20°C. Avoid freeze/thaw cycles.		
Storage buffer	Supplied in 20 mM phosphate (pH 7.5), 150 mM NaCl, 100 μg/ml BSA, 50% glycerol and less than 0.02% sodium azide		

General Information

Background	EIF4B is one of the mammalian eukaryotic initiation factors (eIF) that are required for the ATP-dependent binding of mRNA to the 40 S ribosomal subunit, and the other eIF proteins are EIF4A, EIF4F. eIF4B is involved in translation of numerous proliferative or anti-apoptotic mRNAs with highly structured 5' UTR and subsequently affect cell growth and survival.
-------------------	--

Immunogen	Polyclonal antibody is produced by immunizing animals with a synthetic peptide of eIF4B.
------------------	--

Purification	Polyclonal antibody was purified by immunogen affinity chromatography.
---------------------	--

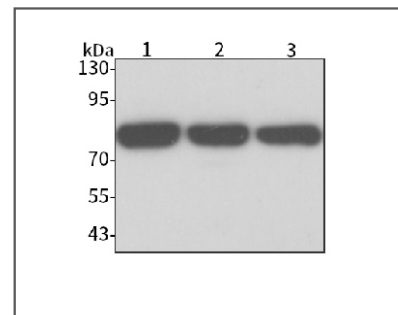
Anti-eIF4B Rabbit pAb



WL04743

For Research Use Only. Not For Use In Diagnostic Procedures

Product Images



Western blot-Anti-eIF4B pAb

Lane 1: Human MCF-7 cell lysate

Lane 2: Human HEK-293 cell lysate

Lane 3: Human A549 cell lysate

All lanes: Anti-eIF4B at 1:1000 dilution

Lysates/proteins at 20-50 μg per lane.

Predicted band size: 68 kDa

Observed band size: 80 kDa