

Anti-EAAT2 Rabbit pAb



WL04355

For Research Use Only. Not For Use In Diagnostic Procedures

Product Information

Product name	Anti-EAAT2 Rabbit pAb		
Source	Rabbit		
Species reactivity	Human, Mouse, Rat, Rabbit		
Tested applications	WB	1:1000-1:2000	
	IHC	1:200-1:400	
Cellular localization	Membrane		
Pack size	50/100/200/500/1000μl		
Storage	Store at -20°C. <b>Avoid freeze/thaw cycles.</b>		
Storage buffer	Supplied in 20 mM phosphate (pH 7.5), 150 mM NaCl, 100 μg/ml		
	BSA, 50% glycerol and less than 0.02% sodium azide		

General Information

Background	Excitatory amino acid transporters (EAATs) are membranebound proteins that are localized in glial cells and pre-synaptic glutamatergic nerve endings. EAATs transport the excitatory neurotransmitters L-glutamate and D-aspartate, a process that is essential for terminating the postsynaptic action of glutamate. EAAT2 (also known as GLT-1), is encoded by SLC1A2 and is a glutamate transporter which can clear the majority of extracellular glutamate in brain and prevent brain seizures.
Immunogen	Polyclonal antibody is produced by immunizing animals with a recombinant protein of EAAT2.
Purification	Polyclonal antibody was purified by Protein A affinity chromatography.

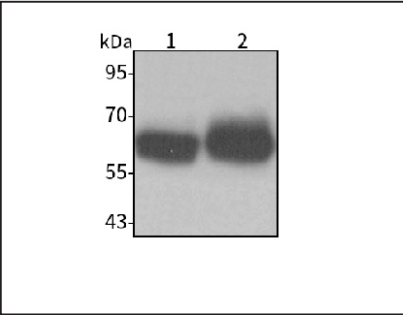
Anti-EAAT2 Rabbit pAb



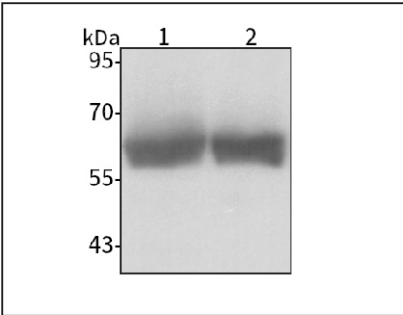
WL04355

For Research Use Only. Not For Use In Diagnostic Procedures

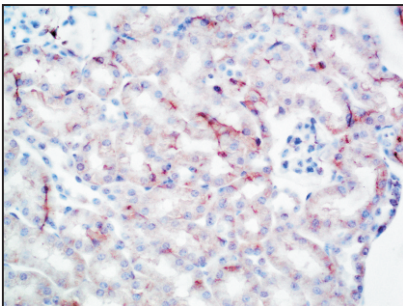
Product Images



**Western blot-Anti-EAAT2 pAb**  
Lane 1: Human U87-MG cell lysate  
Lane 2: Human SH-SY5Y cell lysate  
All lanes: Anti-EAAT2 at 1:1000 dilution  
Lysates/proteins at 20-50 µg per lane.  
Predicted band size: 62 kDa  
Observed band size: 62 kDa



**Western blot-Anti-EAAT2 pAb**  
Lane 1: Mouse brain tissue lysate  
Lane 2: Rat brain tissue lysate  
All lanes: Anti-EAAT2 at 1:1000 dilution  
Lysates/proteins at 20-50 µg per lane.  
Predicted band size: 62 kDa  
Observed band size: 62 kDa



**Immunohistochemistry-Anti-EAAT2 pAb**  
Immunohistochemical analysis of paraffin-embedded mouse kidney using anti-EAAT2 Rabbit Antibody at 1:200 dilution.  
Perform heat mediated antigen retrieval with Tris-EDTA buffer pH 9.0

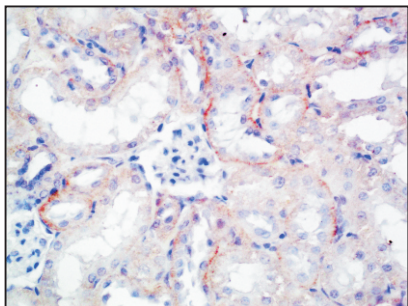
## Anti-EAAT2 Rabbit pAb



WL04355

For Research Use Only. Not For Use In Diagnostic Procedures

### Product Information



#### Immunohistochemistry-Anti-EAAT2 pAb

Immunohistochemical analysis of paraffin-embedded rat kidney using anti-EAAT2 Rabbit Antibody at 1:200 dilution.

Perform heat mediated antigen retrieval with Tris-EDTA buffer pH 9.0