

## Anti-CD16b Rabbit pAb



WL04823

For Research Use Only. Not For Use In Diagnostic Procedures

## Product Information

<b>Product name</b>	Anti-CD16b Rabbit pAb	
<b>Source</b>	Rabbit	
<b>Species reactivity</b>	Human, Mouse, Rat	
<b>Tested applications</b>	WB	1:1000-1:2000
<b>Pack size</b>	50/100/200/500/1000µl	
<b>Storage</b>	Store at -20°C. <b>Avoid freeze/thaw cycles.</b>	
<b>Storage buffer</b>	Supplied in 20 mM phosphate (pH 7.5), 150 mM NaCl, 100 µg/ml BSA, 50% glycerol and less than 0.02% sodium azide	

## General Information

<b>Background</b>	Cd16 is a low affinity receptor for the Fc region of gamma immunoglobulins (IgG). Receptor found on the surface of natural killer cells, neutrophil polymorphonuclear leukocytes, monocytes and macrophages. CD16 mediates antibody-dependent cellular cytotoxicity (ADCC) and other antibody-dependent responses, such as phagocytosis.
-------------------	--

<b>Immunogen</b>	Polyclonal antibody is produced by immunizing animals with a synthetic peptide of Cd16b.
------------------	--

<b>Purification</b>	Polyclonal antibody was purified by Protein A affinity chromatography.
---------------------	--

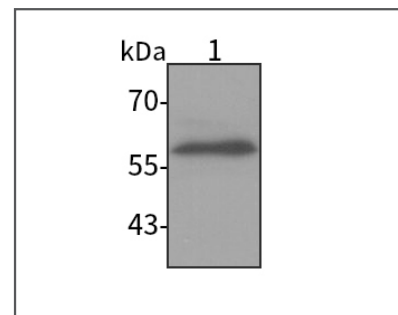
## Anti-CD16b Rabbit pAb



WL04823

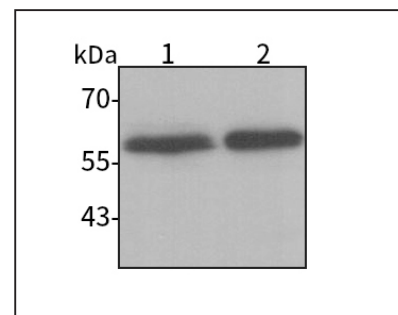
For Research Use Only. Not For Use In Diagnostic Procedures

## Product Images



## Western blot-Anti-CD16b pAb

Lane 1: Human Raji cell lysate  
 All lanes: Anti-CD16b at 1:1000 dilution  
 Lysates/proteins at 20-50 µg per lane.  
 Predicted band size: 29 kDa  
 Observed band size: 50-70 kDa



## Western blot-Anti-CD16b pAb

Lane 1: Mouse spleen tissue lysate  
 Lane 2: Rat spleen tissue lysate  
 All lanes: Anti-CD16b at 1:1000 dilution  
 Lysates/proteins at 20-50 µg per lane.  
 Predicted band size: 29 kDa  
 Observed band size: 50-70 kDa