

## Anti-Calcitonin receptor/CT-R Rabbit pAb



WL04820

For Research Use Only. Not For Use In Diagnostic Procedures

## Product Information

<b>Product name</b>	Anti-Calcitonin receptor/CT-R Rabbit pAb
<b>Source</b>	Rabbit
<b>Species reactivity</b>	Human, Mouse, Rat
<b>Tested applications</b>	WB 1:500-1:1000
<b>Pack size</b>	50/100/200/500/1000μl
<b>Storage</b>	Store at -20°C. <b>Avoid freeze/thaw cycles.</b>
<b>Storage buffer</b>	Supplied in 20 mM phosphate (pH 7.5), 150 mM NaCl, 100 μg/ml BSA, 50% glycerol and less than 0.02% sodium azide

## General Information

<b>Background</b>	This gene encodes a high affinity receptor for the peptide hormone calcitonin and belongs to a subfamily of seven transmembrane-spanning G protein-coupled receptors. The encoded protein is involved in maintaining calcium homeostasis and in regulating osteoclast-mediated bone resorption. Polymorphisms in this gene have been associated with variations in bone mineral density and onset of osteoporosis.
-------------------	--

<b>Immunogen</b>	Polyclonal antibody is produced by immunizing animals with a synthetic peptide of Calcitonin receptor/CT-R.
------------------	---

<b>Purification</b>	Polyclonal antibody was purified by immunogen affinity chromatography.
---------------------	--

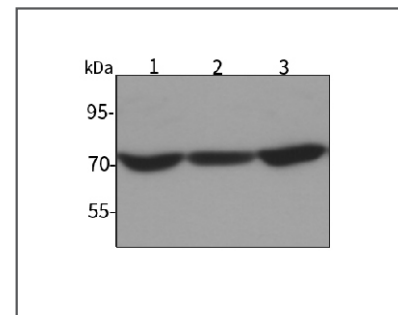
## Anti-Calcitonin receptor/CT-R Rabbit pAb



WL04820

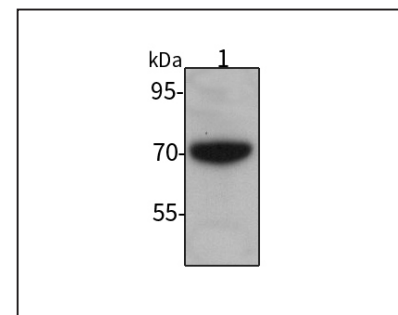
For Research Use Only. Not For Use In Diagnostic Procedures

## Product Images



Western blot-Anti-Calcitonin receptor/CT-R pAb

Lane 1: Human Hela cell lysate  
 Lane 2: Human HEK-293 cell lysate  
 Lane 3: Human HCT116 cell lysate  
 All lanes: Anti-Calcitonin receptor/CT-R at 1:1000 dilution  
 Lysates/proteins at 20-50 μg per lane.  
 Predicted band size: 57 kDa  
 Observed band size: 70 kDa



Western blot-Anti-Calcitonin receptor/CT-R pAb

Lane 1: Mouse kidney tissue lysate  
 All lanes: Anti-Calcitonin receptor/CT-R at 1:1000 dilution  
 Lysates/proteins at 20-50 μg per lane.  
 Predicted band size: 57 kDa  
 Observed band size: 70 kDa