

## Anti-HSP60 Rabbit pAb



WL03647

For Research Use Only. Not For Use In Diagnostic Procedures

## Product Information

<b>Product name</b>	Anti-HSP60 Rabbit pAb	
<b>Source</b>	Rabbit	
<b>Species reactivity</b>	Human, Mouse, Rat	
<b>Tested applications</b>	WB	1:1000-1:2000
	IHC	1:100-1:400
	IF	1:100-1:400
<b>Cellular localization</b>	Mitochondrion matrix	
<b>Pack size</b>	50/100/200/500/1000μl	
<b>Storage</b>	Store at -20°C. <b>Avoid freeze/thaw cycles.</b>	
<b>Storage buffer</b>	Supplied in 20 mM phosphate (pH 7.5), 150 mM NaCl, 100 μg/ml	
	BSA, 50% glycerol and less than 0.02% sodium azide	

## General Information

<b>Background</b>	The heat shock proteins (HSPs) comprise a group of highly conserved, abundantly expressed proteins with diverse functions, including the assembly and sequestering of multiprotein complexes, transportation of nascent poly-peptide chains across cellular membranes, and the regulation of protein folding. HSP60 has primarily been known as a mitochondrial protein that is important for folding key proteins after import into the mitochondria. An additional role of HSP 60 is to act as a cell surface marker for $\gamma/\delta$ T cell recognition.
-------------------	--

<b>Immunogen</b>	Polyclonal antibody is produced by immunizing animals with a synthetic peptide of HSP60.
------------------	--

<b>Purification</b>	Polyclonal antibody was purified by proteinA affinity chromatography.
---------------------	---

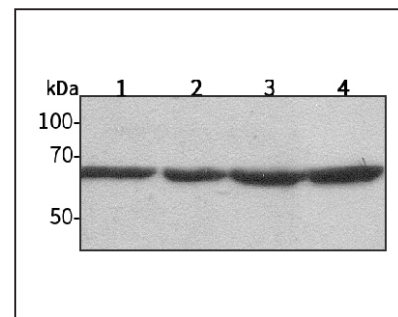
## Anti-HSP60 Rabbit pAb



WL03647

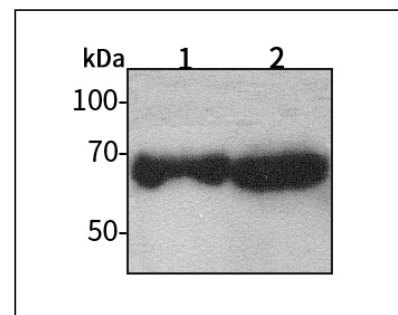
For Research Use Only. Not For Use In Diagnostic Procedures

## Product Images



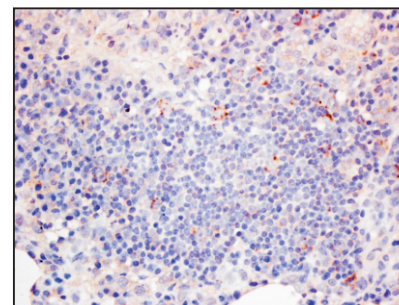
Western blot-Anti-HSP60 pAb

Lane 1: Human HEK-293 cell lysate  
 Lane 2: Human A549 cell lysate  
 Lane 3: Human SW480 cell lysate  
 Lane 4: Human MCF-7 cell lysate  
 All lanes: Anti-HSP60 at 1:1000 dilution  
 Lysates/proteins at 20-50 μg per lane.  
 Predicted band size: 61 kDa  
 Observed band size: 60 kDa



Western blot-Anti-HSP60 pAb

Lane 1: Mouse heart tissue lysate  
 Lane 2: Rat stomach tissue lysate  
 All lanes: Anti-HSP60 at 1:1000 dilution  
 Lysates/proteins at 20-50 μg per lane.  
 Predicted band size: 61 kDa  
 Observed band size: 60 kDa



Immunohistochemistry-Anti-HSP60 pAb

Immunohistochemical analysis of paraffin-embedded rat lung using anti-HSP60 Rabbit Antibody at 1:200 dilution.  
 Perform heat mediated antigen retrieval with Tris-EDTA buffer pH 9.0

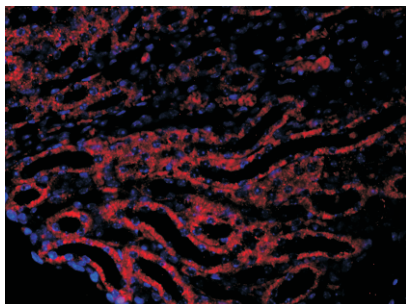
## Anti-HSP60 Rabbit pAb



WL03647

For Research Use Only. Not For Use In Diagnostic Procedures

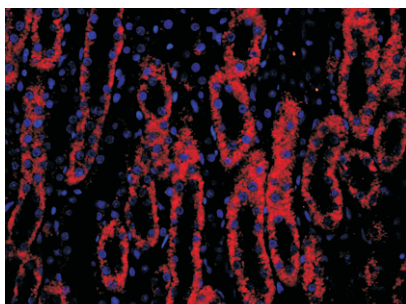
### Product Information



#### Immunofluorescence-Anti-HSP60 pAb

Immunofluorescence analysis of paraffin-embedded mouse kidney using anti-HSP60 Rabbit Antibody at 1:200 dilution.

Perform heat mediated antigen retrieval with Tris-EDTA buffer pH 9.0



#### Immunofluorescence-Anti-HSP60 pAb

Immunofluorescence analysis of paraffin-embedded rat kidney using anti-HSP60 Rabbit Antibody at 1:200 dilution.

Perform heat mediated antigen retrieval with Tris-EDTA buffer pH 9.0