

## Anti-EGF Rabbit pAb



WL03499

For Research Use Only. Not For Use In Diagnostic Procedures

## Product Information

<b>Product name</b>	Anti-EGF Rabbit pAb	
<b>Source</b>	Rabbit	
<b>Species reactivity</b>	Human, Mouse, Rat	
<b>Tested applications</b>	WB	1:1000-1:2000
	IHC	1:500
	IF	1:500

**Cellular localization** Membrane

**Pack size** 50/100/200/500/1000μl

**Storage** Store at -20°C. **Avoid freeze/thaw cycles.**

**Storage buffer** Supplied in 20 mM phosphate (pH 7.5), 150 mM NaCl, 100 μg/ml BSA, 50% glycerol and less than 0.02% sodium azide

## General Information

**Background** EGF is a member of the epidermal growth factor superfamily. This protein acts as a potent mitogenic factor that plays an important role in the growth, proliferation and differentiation of numerous cell types. This protein acts by binding with high affinity to the cell surface receptor, epidermal growth factor receptor. Defects in this gene are the cause of hypomagnesemia type 4. Dysregulation of this gene has been associated with the growth and progression of certain cancers.

**Immunogen** Polyclonal antibody is produced by immunizing animals with a synthetic peptide of EGF.

**Purification** Polyclonal antibody was purified by Protein A affinity chromatography.

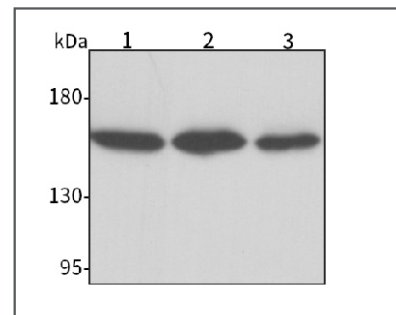
## Anti-EGF Rabbit pAb



WL03499

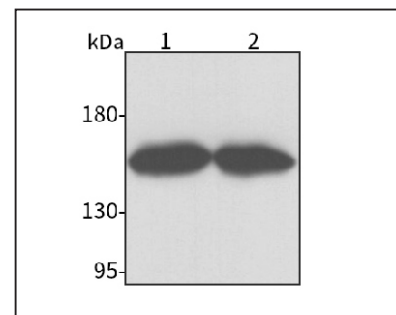
For Research Use Only. Not For Use In Diagnostic Procedures

## Product Images



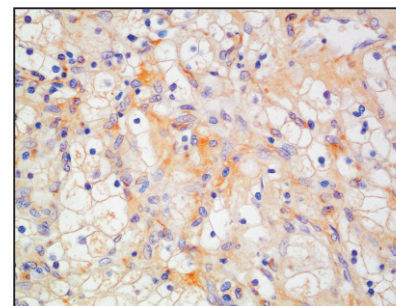
## Western blot-Anti-EGF pAb

**Lane 1:** Human A549 cell lysate  
**Lane 2:** Human MCF-7 cell lysate  
**Lane 3:** Human Hela cell lysate  
**All lanes:** Anti-EGF at 1:1000 dilution  
 Lysates/proteins at 20-50 μg per lane.  
 Predicted band size: 133 kDa  
 Observed band size: 160 kDa



## Western blot-Anti-EGF pAb

**Lane 1:** Mouse kidney tissue lysate  
**Lane 2:** Rat kidney tissue lysate  
**All lanes:** Anti-EGF at 1:1000 dilution  
 Lysates/proteins at 20-50 μg per lane.  
 Predicted band size: 133 kDa  
 Observed band size: 160 kDa



## Immunohistochemistry-Anti-EGF pAb

Immunohistochemical analysis of paraffin-embedded human kidney using anti-EGF Rabbit Antibody at 1:500 dilution.  
 Perform heat mediated antigen retrieval with Tris-EDTA buffer pH 9.0

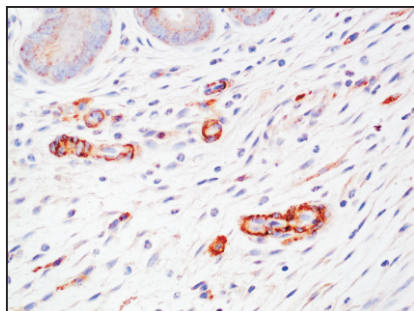
## Anti-EGF Rabbit pAb



WL03499

For Research Use Only. Not For Use In Diagnostic Procedures

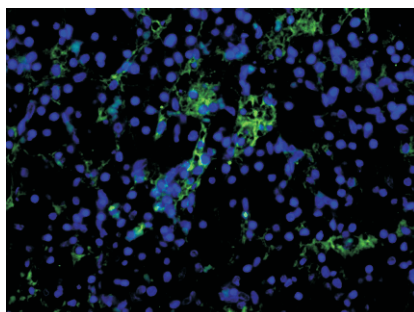
### Product Information



#### Immunohistochemistry-Anti-EGF pAb

Immunohistochemical analysis of paraffin-embedded mouse kidney using anti-EGF Rabbit Antibody at 1:500 dilution.

Perform heat mediated antigen retrieval with Tris-EDTA buffer pH 9.0



#### Immunofluorescence-Anti-EGF pAb

Immunofluorescence analysis of paraffin-embedded human kidney using anti-EGF Rabbit Antibody at 1:500 dilution.

Perform heat mediated antigen retrieval with Tris-EDTA buffer pH 9.0