

Anti-GHR Rabbit pAb



WL00898

For Research Use Only. Not For Use In Diagnostic Procedures

Product Information

Product name	Anti-GHR Rabbit pAb	
Source	Rabbit	
Species reactivity	Human, Mouse, Rat	
Tested applications	WB	1:1000-1:2000
	IHC	1:100-1:400
	IF	1:500
Cellular localization	Secreted	
Pack size	50/100/200/500/1000µl	
Storage	Store at -20°C. Avoid freeze/thaw cycles.	
Storage buffer	Supplied in 20 mM phosphate (pH 7.5), 150 mM NaCl, 100 µg/ml	
	BSA, 50% glycerol and less than 0.02% sodium azide	

General Information

Background	GHR (growth hormone receptor) binds growth hormone (GH), which is produced by the anterior pituitary and regulates body growth and other metabolic processes. GHR is an integral membrane protein and a member of the cytokine receptor family. Mutations in this gene have been associated with Laron syndrome, also known as the growth hormone insensitivity syndrome (GHIS), a disorder characterized by short stature. In humans and rabbits, but not rodents, growth hormone binding protein (GHBP) is generated by proteolytic cleavage of the extracellular ligand-binding domain from the mature growth hormone receptor protein.
Immunogen	Polyclonal antibody is produced by immunizing animals with a synthetic peptide of GHR.
Purification	Polyclonal antibody was purified by protein A affinity chromatography.

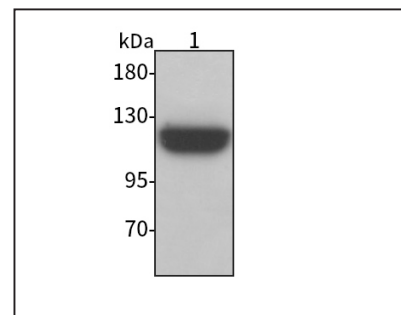
Anti-GHR Rabbit pAb



WL00898

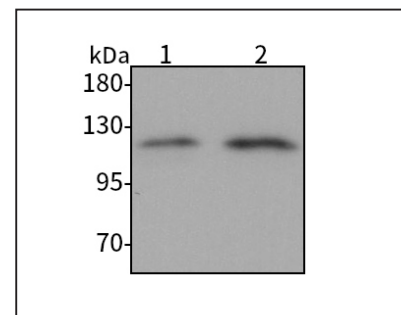
For Research Use Only. Not For Use In Diagnostic Procedures

Product Images



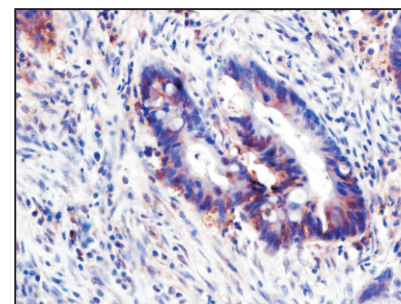
Western blot-Anti-GHR pAb

Lane 1: Human HEP-G2 cell lysate
All lanes: Anti-GHR at 1:1000 dilution
 Lysates/proteins at 20-50 µg per lane.
 Predicted band size: 72 kDa
 Observed band size: 120 kDa



Western blot-Anti-GHR pAb

Lane 1: Mouse liver tissue lysate
Lane 2: Rat liver tissue lysate
All lanes: Anti-GHR at 1:1000 dilution
 Lysates/proteins at 20-50 µg per lane.
 Predicted band size: 72 kDa
 Observed band size: 120 kDa



Immunohistochemistry-Anti-GHR pAb

Immunohistochemical analysis of paraffin-embedded human colon cancer using anti-GHR Rabbit Antibody at 1:150 dilution.
 Perform heat mediated antigen retrieval with Tris-EDTA buffer pH 9.0

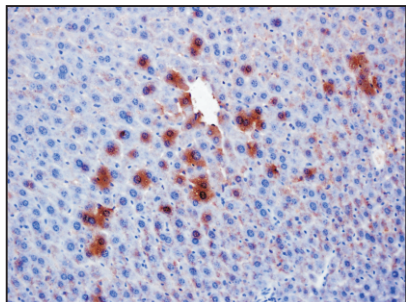
Anti-GHR Rabbit pAb



WL00898

For Research Use Only. Not For Use In Diagnostic Procedures

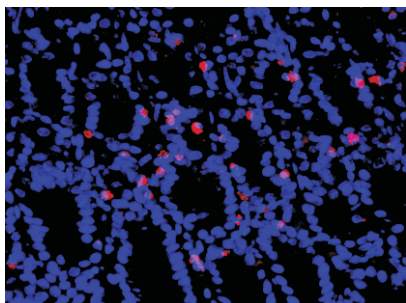
Product Images



Immunohistochemistry-Anti-GHR pAb

Immunohistochemical analysis of paraffin-embedded mouse liver using anti-GHR Rabbit Antibody at 1:150 dilution.

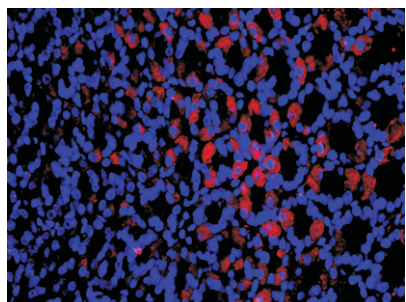
Perform heat mediated antigen retrieval with Tris-EDTA buffer pH 9.0



Immunofluorescence-Anti-GHR pAb

Immunofluorescence analysis of paraffin-embedded mouse stomach using anti-GHR Rabbit Antibody at 1:500 dilution.

Perform heat mediated antigen retrieval with Tris-EDTA buffer pH 9.0



Immunofluorescence-Anti-GHR pAb

Immunofluorescence analysis of paraffin-embedded rat stomach using anti-GHR Rabbit Antibody at 1:500 dilution.

Perform heat mediated antigen retrieval with Tris-EDTA buffer pH 9.0