

Anti-CD14 Rabbit pAb



WL04517

For Research Use Only. Not For Use In Diagnostic Procedures

Product Information

Product name	Anti-CD14 Rabbit pAb	
Source	Rabbit	
Species reactivity	Human, Mouse, Rat, Rabbit	
Tested applications	WB	1:1000-1:2000
	IHC, IF	1:100-1:400
Cellular localization	Cell membrane.	
Pack size	50/100/200/500/1000μl	
Storage	Store at -20°C. Avoid freeze/thaw cycles.	
Storage buffer	Supplied in 20 mM phosphate (pH 7.5), 150 mM NaCl, 100 μg/ml	
	BSA, 50% glycerol and less than 0.02% sodium azide	

General Information

Background	CD14 is a glycosylphosphatidylinositol (GPI)-anchored protein found on the surfaces of monocytes and polymorphonuclear leukocytes. It cooperates with other proteins to mediate the innate immune response to bacterial lipopolysaccharide.
Immunogen	Polyclonal antibody is produced by immunizing animals with a synthetic peptide of CD14.
Purification	Polyclonal antibody was purified by Protein A affinity chromatography.

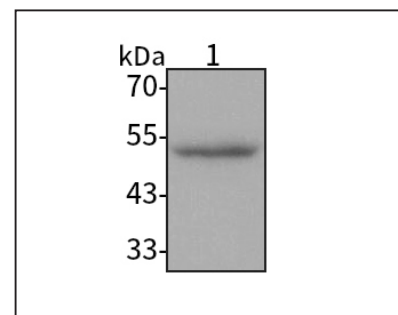
Anti-CD14 Rabbit pAb



WL04517

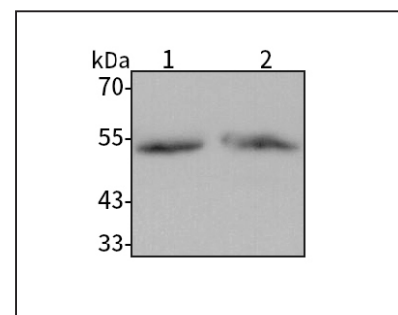
For Research Use Only. Not For Use In Diagnostic Procedures

Product Images



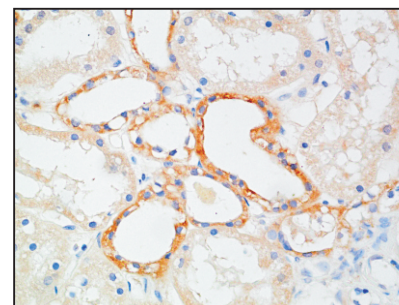
Western blot-Anti-CD14 pAb

Lane 1: Human THP-1 cell lysate
 All lanes: Anti-CD14 at 1:1000 dilution
 Lysates/proteins at 20-50 μg per lane
 Predicted band size: 40 kDa
 Observed band size: 50-55 kDa



Western blot-Anti-CD14 pAb

Lane 1: Mouse spleen tissue lysate
 Lane 2: Rat spleen tissue lysate
 All lanes: Anti-CD14 at 1:1000 dilution
 Lysates/proteins at 20-50 μg per lane
 Predicted band size: 40 kDa
 Observed band size: 50-55 kDa



Immunohistochemistry-Anti-CD14 pAb

Immunohistochemical analysis of paraffin-embedded human kidney using anti-CD14 Rabbit Antibody at 1:200 dilution.
 Perform heat mediated antigen retrieval with Tris-EDTA buffer pH 9.0

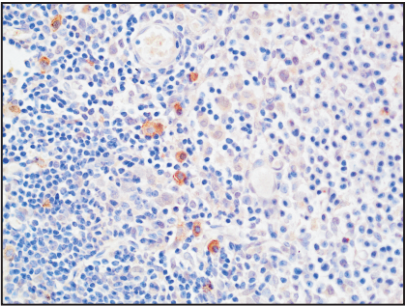
Anti-CD14 Rabbit pAb



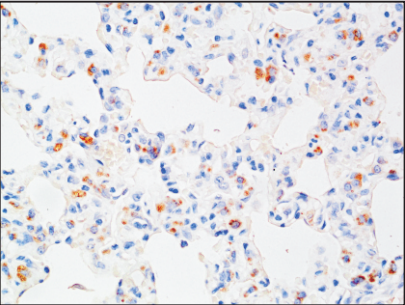
WL04517

For Research Use Only.Not For Use In Diagnostic Procedures

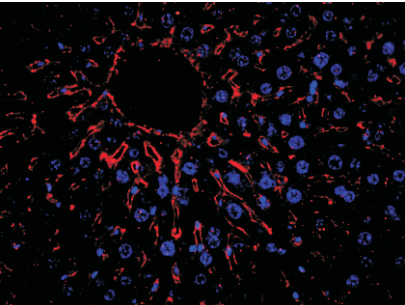
Product Images



Immunohistochemistry-Anti-CD14 pAb
Immunohistochemical analysis of paraffin-embedded mouse lymph gland using anti-CD14 Rabbit Antibody at 1:200 dilution.
Perform heat mediated antigen retrieval with Tris-EDTA buffer pH 9.0



Immunohistochemistry-Anti-CD14 pAb
Immunohistochemical analysis of paraffin-embedded rat lung using anti-CD14 Rabbit Antibody at 1:200 dilution.
Perform heat mediated antigen retrieval with Tris-EDTA buffer pH 9.0



Immunofluorescence-Anti-CD14 pAb
Immunofluorescence analysis of paraffin-embedded mouse liver using anti-CD14 Rabbit Antibody at 1:200 dilution.
Perform heat mediated antigen retrieval with Tris-EDTA buffer pH 9.0

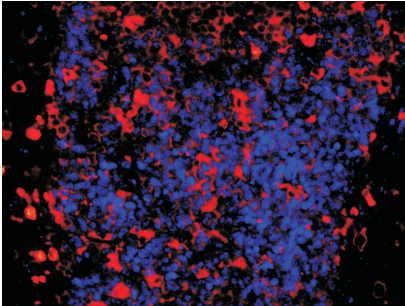
Anti-CD14 Rabbit pAb



WL04517

For Research Use Only.Not For Use In Diagnostic Procedures

Product Images



Immunofluorescence-Anti-CD14 pAb
Immunofluorescence analysis of paraffin-embedded rabbit thymus using anti-CD14 Rabbit Antibody at 1:200 dilution.
Perform heat mediated antigen retrieval with Tris-EDTA buffer pH 9.0