

## Anti-PARP1 Rabbit pAb



WL01932

For Research Use Only. Not For Use In Diagnostic Procedures

## Product Information

<b>Product name</b>	Anti-PARP1 Rabbit pAb		
<b>Source</b>	Rabbit		
<b>Species reactivity</b>	Human, Mouse, Rat, Rabbit		
<b>Tested applications</b>	Western blot	1:1000-1:2000	
	Immunohistochemistry	1:100:1:300	
<b>Cellular localization</b>	Nucleus, nucleolus. Cytoplasm.		
<b>Pack size</b>	50/100/200/500/1000μl		
<b>Storage</b>	Store at -20°C. <b>Avoid freeze/thaw cycles.</b>		
<b>Storage buffer</b>	Supplied in 20 mM phosphate (pH 7.5), 150 mM NaCl, 100 μg/ml		
	BSA, 50% glycerol and less than 0.02% sodium azide		

## General Information

<b>Background</b>	PARP1 (poly (ADP ribose) polymerase 1) is a ribozyme that catalyzes the poly (ADP ribose) of many key proteins in the body and participates in the regulation of various important cellular processes, such as differentiation, proliferation, and tumor transformation, as well as the regulation of molecular events involved in cell recovery from DNA damage. The normal function of PARP1 is the routine repair of DNA damage. The appearance of PARP fragments is often considered an important biomarker of apoptosis.
<b>Immunogen</b>	Polyclonal antibody is produced by immunizing animals with a synthetic peptide of PARP1.
<b>Purification</b>	Polyclonal antibody was purified by Protein A affinity chromatography.

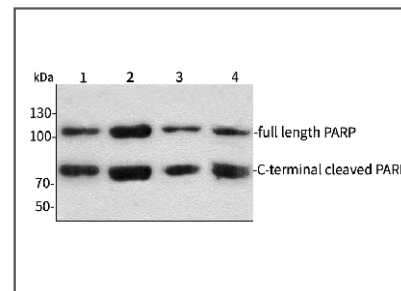
## Anti-PARP1 Rabbit pAb



WL01932

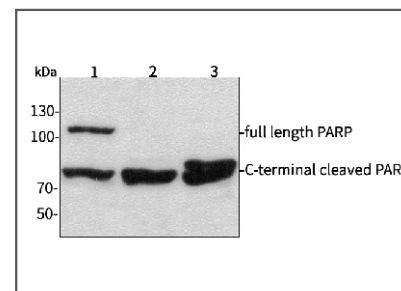
For Research Use Only. Not For Use In Diagnostic Procedures

## Product Images



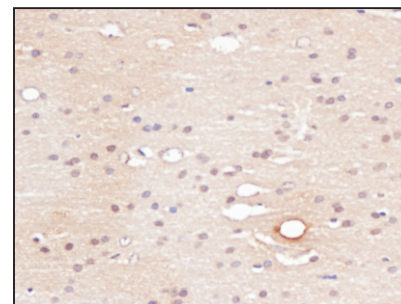
## Western blot-Anti-PARP1 pAb

**Lane 1:** Human HepG2 cell lysate 24μg  
**Lane 2:** Human Hela cell lysate 24μg  
**Lane 3:** Human BGC-823 cell lysate 24μg  
**Lane 4:** Human MGC-803 cell lysate 24μg  
**All lanes:** Anti-PARP1 at 1:1000 dilution  
 Lysates/proteins at 20-50 μg per lane.  
 Predicted band size: 113 kDa  
 Observed band size: 113-116 kDa, 89 kDa



## Western blot-Anti-PARP1 pAb

**Lane 1:** Mouse liver tissue lysate 24μg  
**Lane 2:** Mouse heart tissue lysate 24μg  
**Lane 3:** Rat brain tissue lysate 24μg  
**All lanes:** Anti-PARP1 at 1:1000 dilution  
 Lysates/proteins at 20-50 μg per lane.  
 Predicted band size: 113 kDa  
 Observed band size: 113-116 kDa, 89 kDa



## Immunohistochemistry-Anti-PARP1 pAb

**Sample:** Human brain tissue  
**Antigen retrieval:** Proteinase K  
**Primary antibody:** 1:200, 4°C, overnight  
**Secondary antibody-Biotin:** 1:150, 37°C, 1h  
**Streptavidin-HRP:** 1:200, 37°C, 30min  
**Visualization:** DAB

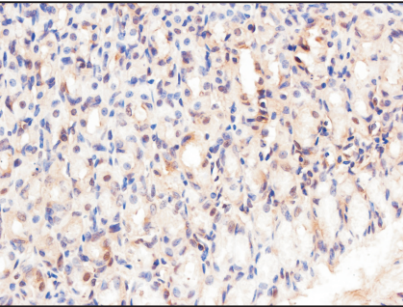
Anti-PARP1 Rabbit pAb



WL01932

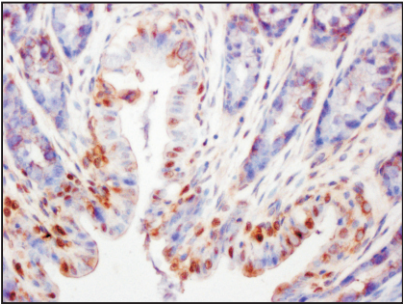
For Research Use Only. Not For Use In Diagnostic Procedures

Product Information



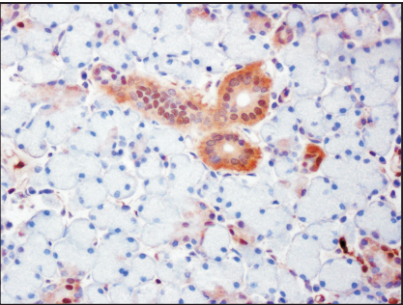
Immunohistochemistry-Anti-PARP1 pAb

**Sample:** Mouse stomach tissue  
**Antigen retrieval:** Proteinase K  
**Primary antibody:** 1:200, 4°C, overnight  
**Secondary antibody-Biotin:** 1:150, 37°C, 1h  
**Streptavidin-HRP:** 1:200, 37°C, 30min  
**Visualization:** DAB



Immunohistochemistry-Anti-PARP1 pAb

**Sample:** Rabbit colon tissue  
**Antigen retrieval:** Proteinase K  
**Primary antibody:** 1:200, 4°C, overnight  
**Secondary antibody-Biotin:** 1:150, 37°C, 1h  
**Streptavidin-HRP:** 1:200, 37°C, 30min  
**Visualization:** DAB



Immunohistochemistry-Anti-PARP1 pAb

**Sample:** Rabbit submaxillary glands tissue  
**Antigen retrieval:** Proteinase K  
**Primary antibody:** 1:200, 4°C, overnight  
**Secondary antibody-Biotin:** 1:150, 37°C, 1h  
**Streptavidin-HRP:** 1:200, 37°C, 30min  
**Visualization:** DAB

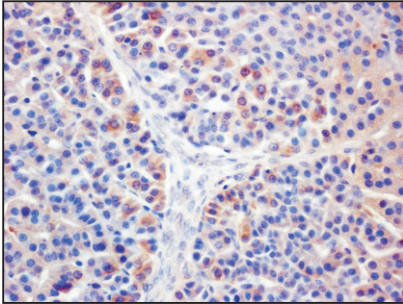
Anti-PARP1 Rabbit pAb



WL01932

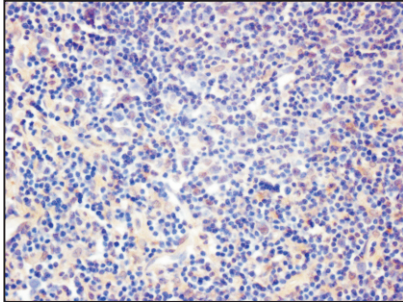
For Research Use Only. Not For Use In Diagnostic Procedures

Product Images



Immunohistochemistry-Anti-PARP1 pAb

**Sample:** Rabbit adrenal gland tissue  
**Antigen retrieval:** Proteinase K  
**Primary antibody:** 1:200, 4°C, overnight  
**Secondary antibody-Biotin:** 1:150, 37°C, 1h  
**Streptavidin-HRP:** 1:200, 37°C, 30min  
**Visualization:** DAB



Immunohistochemistry-Anti-PARP1 pAb

**Sample:** Rabbit thymus tissue  
**Antigen retrieval:** Proteinase K  
**Primary antibody:** 1:200, 4°C, overnight  
**Secondary antibody-Biotin:** 1:150, 37°C, 1h  
**Streptavidin-HRP:** 1:200, 37°C, 30min  
**Visualization:** DAB