

Anti-DNA pol β Rabbit pAb

WL03173

For Research Use Only. Not For Use In Diagnostic Procedures

Product Information

Product name	Anti-DNA pol β Rabbit pAb		
Source	Rabbit		
Species reactivity	Human, Mouse, Rat		
Tested applications	WB	1:1000-1:2000	
Pack size	50/100/200/500/1000 μ l		
Storage	Store at -20°C. Avoid freeze/thaw cycles.		
Storage buffer	Supplied in 20 mM phosphate (pH 7.5), 150 mM NaCl, 100 μ g/ml BSA, 50% glycerol and less than 0.02% sodium azide		

General Information

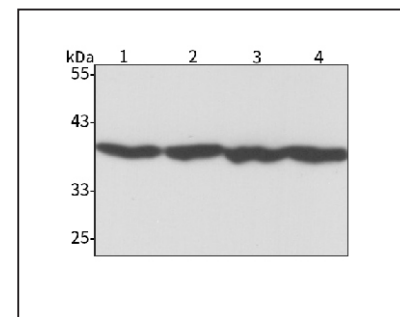
Background	The DNA pol β is a DNA polymerase involved in base excision and repair, also called gap-filling DNA synthesis. DNA pol β comprises an amino-terminal 8-kDa domain and a carboxy-terminal 31-kDa domain. The protein, acting as a monomer, is normally found in the cytoplasm, but it translocates to the nucleus upon DNA damage. Mammalian DNA pol β , a DNA repair polymerase, is constitutively expressed in cultured cells, but treatment of cells with the DNA-alkylating agents such as N-methyl-N'-nitro-N-nitrosoguanidine (MNNG) or methyl methanesulfonate up-regulates beta-pol level.
Immunogen	Polyclonal antibody is produced by immunizing animals with a synthetic peptide of DNA pol β .
Purification	Polyclonal antibody was purified by Protein A affinity chromatography.

Anti-DNA pol β Rabbit pAb

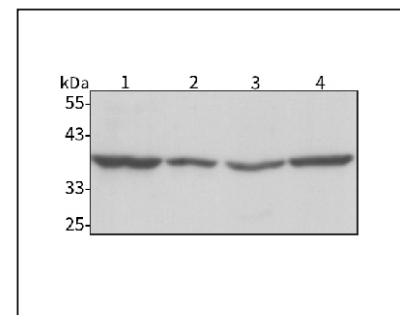
WL03173

For Research Use Only. Not For Use In Diagnostic Procedures

Product Images

Western blot-Anti-DNA pol β pAb

Lane 1: Human HEK293 cell lysate
 Lane 2: Human A549 cell lysate
 Lane 3: Human Hela cell lysate
 Lane 4: Human A2780 cell lysate
 All lanes: Anti-DNA pol β at 1:1000 dilution
 Lysates/proteins at 20-50 μ g per lane.
 Predicted band size: 38 kDa
 Observed band size: 38 kDa

Western blot-Anti-DNA pol β pAb

Lane 1: Mouse stomach tissue lysate
 Lane 2: Mouse lung tissue lysate
 Lane 3: Rat lung tissue lysate
 Lane 4: Rat colon tissue lysate
 All lanes: Anti-DNA pol β at 1:1000 dilution
 Lysates/proteins at 20-50 μ g per lane.
 Predicted band size: 38 kDa
 Observed band size: 38 kDa