

## Anti-RAC1 Rabbit pAb



WL02851

For Research Use Only. Not For Use In Diagnostic Procedures

## Product Information

<b>Product name</b>	Anti-RAC1 Rabbit pAb		
<b>Source</b>	Rabbit		
<b>Species reactivity</b>	Human, Mouse, Rat		
<b>Tested applications</b>	WB	1:1000-1:2000	
<b>Pack size</b>	50/100/200/500/1000μl		
<b>Storage</b>	Store at -20°C. <b>Avoid freeze/thaw cycles.</b>		
<b>Storage buffer</b>	Supplied in 20 mM phosphate (pH 7.5), 150 mM NaCl, 100 μg/ml BSA, 50% glycerol and less than 0.02% sodium azide		

## General Information

**Background**

Rac1b, Also known as TC25, it belongs to the small GTPase superfamily and Rho family. Rac1 is a small GTPase associated with the plasma membrane, cycling between active GTP binding and inactive GDP binding states. In its active state, it binds to various effector proteins to regulate cellular responses, such as secretion processes, phagocytosis of apoptotic cells, epithelial cell polarization, and the formation of membrane loaded formulas induced by growth factors. Rac1 P21/Rho GDI heterodimer is the active component of cytoplasmic factor Sigma 1, which participates in the stimulation of NADPH oxidase activity in macrophages (through similarity).

**Immunogen**

Polyclonal antibody is produced by immunizing animals with a synthetic peptide of RAC1.

**Purification**

Polyclonal antibody was purified by Protein A affinity chromatography.

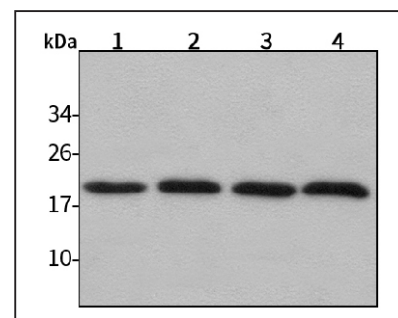
## Anti-RAC1 Rabbit pAb



WL02851

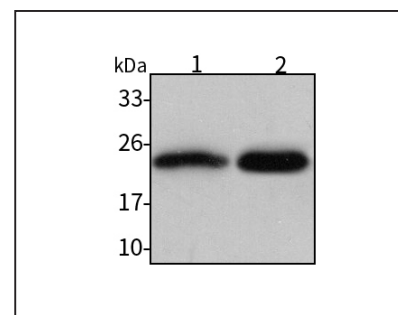
For Research Use Only. Not For Use In Diagnostic Procedures

## Product Images



Western blot-Anti-RAC1 pAb

Lane 1: Human HepG2 cell lysate  
 Lane 2: Human Hela cell lysate  
 Lane 3: Human BGC-823 cell lysate  
 Lane 4: Human MGC-803 cell lysate  
 All lanes: Anti-RAC1 at 1:1000 dilution  
 Lysates/proteins at 20-50 μg per lane.  
 Predicted band size: 21 kDa  
 Observed band size: 21 kDa



Western blot-Anti-RAC1 pAb

Lane 1: Mouse kidney tissue lysate  
 Lane 2: Rat stomach lysate  
 All lanes: Anti-RAC1 at 1:1000 dilution  
 Lysates/proteins at 20-50 μg per lane.  
 Predicted band size: 21 kDa  
 Observed band size: 21 kDa