

## Anti-GAPDH Rabbit pAb



WL01114

For Research Use Only. Not For Use In Diagnostic Procedures

## Product Information

<b>Product name</b>	Anti-GAPDH Rabbit pAb	
<b>Source</b>	Rabbit	
<b>Species reactivity</b>	Human, Mouse, Rat	
<b>Tested applications</b>	WB	1:500-1:1000
	IHC	1:100-1:500
	IF	1:300
<b>Cellular localization</b>	Cytoplasm. Nucleus. Membrane.	
<b>Pack size</b>	50/100/200/500/1000μl	
<b>Storage</b>	Store at -20°C. <b>Avoid freeze/thaw cycles.</b>	
<b>Storage buffer</b>	Supplied in 20 mM phosphate (pH 7.5), 150 mM NaCl, 100 μg/ml	
	BSA, 50% glycerol and less than 0.02% sodium azide	

## General Information

<b>Background</b>	Glyceraldehyde-3-phosphate dehydrogenase (GAPDH) catalyzes the phosphorylation of glyceraldehyde-3-phosphate during glycolysis. Though differentially expressed from tissue to tissue, GAPDH is thought to be a constitutively expressed housekeeping protein. For this reason, GAPDH mRNA and protein levels are often measured as controls in experiments quantifying specific changes in expression of other targets. Recent work has elucidated roles for GAPDH in apoptosis, gene expression and nuclear transport. GAPDH may also play a role in neurodegenerative pathologies such as Huntington and Alzheimer's diseases.
<b>Immunogen</b>	Polyclonal antibody is produced by immunizing animals with a synthetic peptide of GAPDH.
<b>Purification</b>	Polyclonal antibody was purified by immunogen affinity chromatography.

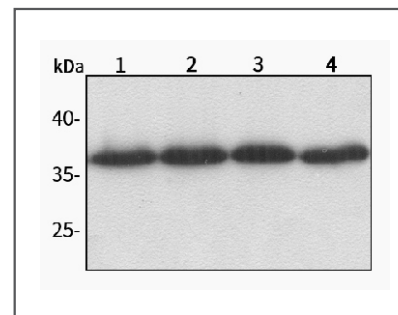
## Anti-GAPDH Rabbit pAb



WL01114

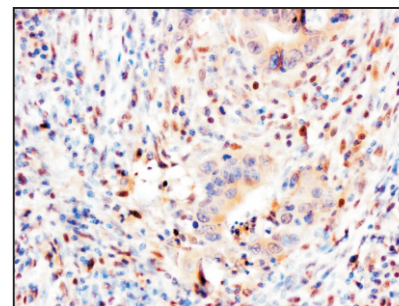
For Research Use Only. Not For Use In Diagnostic Procedures

## Product Images



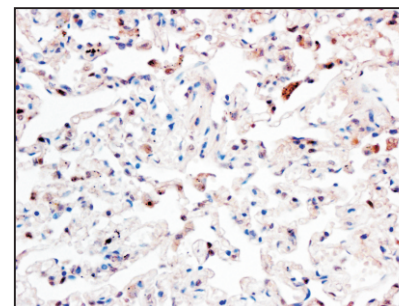
## Western blot-Anti-GAPDH pAb

Lane 1: Human MGC-803 cell lysate  
 Lane 2: Human SGC-7901 cell lysate  
 Lane 3: Human Caco2 cell lysate  
 Lane 4: Human MCF-7 cell lysate  
 All lanes: Anti-GAPDH at 1:1000 dilution  
 Lysates/proteins at 20-50 μg per lane.  
 Predicted band size: 37 kDa  
 Observed band size: 37 kDa



## Immunohistochemistry-Anti-GAPDH pAb

Immunohistochemical analysis of paraffin-embedded human colon cancer using anti-GAPDH Rabbit Antibody at 1:200 dilution.  
 Perform heat mediated antigen retrieval with Tris-EDTA buffer pH 9.0



## Immunohistochemistry-Anti-GAPDH pAb

Immunohistochemical analysis of paraffin-embedded human lung cancer using anti-GAPDH Rabbit Antibody at 1:150 dilution.  
 Perform heat mediated antigen retrieval with Tris-EDTA buffer pH 9.0

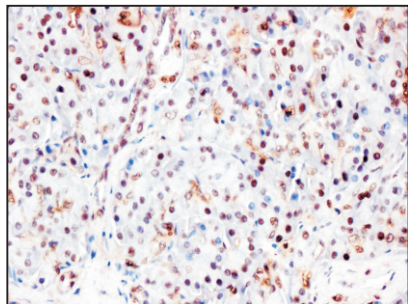
## Anti-GAPDH Rabbit pAb



WL01114

For Research Use Only. Not For Use In Diagnostic Procedures

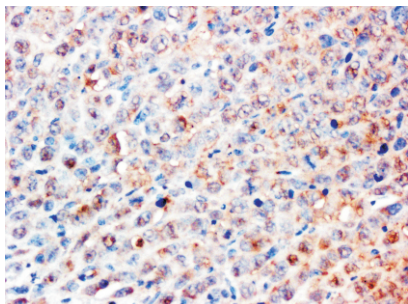
### Product Information



#### Immunohistochemistry-Anti-GAPDH pAb

Immunohistochemical analysis of paraffin-embedded human pancreas cancer using anti-GAPDH Rabbit Antibody at 1:200 dilution.

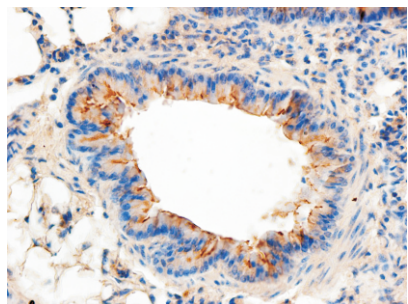
Perform heat mediated antigen retrieval with Tris-EDTA buffer pH 9.0



#### Immunohistochemistry-Anti-GAPDH pAb

Immunohistochemical analysis of paraffin-embedded human cancer cell cancer using anti-GAPDH Rabbit Antibody at 1:200 dilution.

Perform heat mediated antigen retrieval with Tris-EDTA buffer pH 9.0



#### Immunohistochemistry-Anti-GAPDH pAb

Immunohistochemical analysis of paraffin-embedded rat lung using anti-GAPDH Rabbit Antibody at 1:500 dilution.

Perform heat mediated antigen retrieval with Tris-EDTA buffer pH 9.0