

## Anti-CD9 Rabbit pAb



WL06408

For Research Use Only. Not For Use In Diagnostic Procedures

## Product Information

<b>Product name</b>	Anti-CD9 Rabbit pAb
<b>Source</b>	Rabbit
<b>Species reactivity</b>	Human, Mouse, Rat
<b>Tested applications</b>	WB 1:1000-1:2000
<b>Pack size</b>	50/100/200/500/1000µl
<b>Storage</b>	Store at -20°C. <b>Avoid freeze/thaw cycles.</b>
<b>Storage buffer</b>	Supplied in 20 mM phosphate (pH 7.5), 150 mM NaCl, 100 µg/ml BSA, 50% glycerol and less than 0.02% sodium azide

## General Information

**Background**

The cell-surface molecule CD9, a member of the transmembrane-4 superfamily, interacts with the integrin family and other membrane proteins, and is postulated to participate in cell migration and adhesion. The encoded protein functions in many cellular processes including differentiation, adhesion, and signal transduction, and expression of this gene plays a critical role in the suppression of cancer cell motility and metastasis.

**Immunogen**

Polyclonal antibody is produced by immunizing animals with a synthetic peptide of CD9.

**Purification**

Polyclonal antibody was purified by Protein A affinity chromatography.

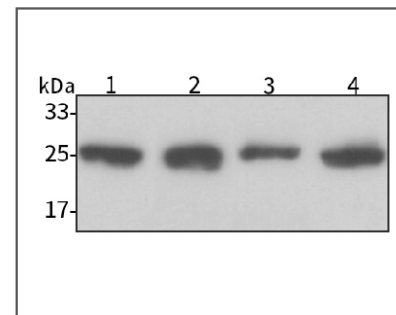
## Anti-CD9 Rabbit pAb



WL06408

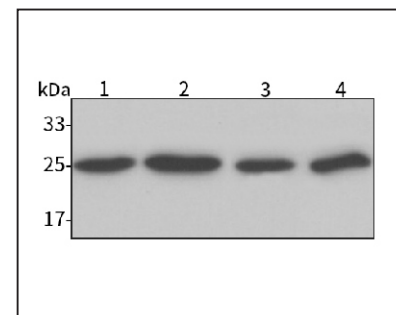
For Research Use Only. Not For Use In Diagnostic Procedures

## Product Images



## Western blot-Anti-CD9 pAb

Lane 1: Human Hela cell lysate  
 Lane 2: Human HEK-293 cell lysate  
 Lane 3: Human HCT116 cell lysate  
 Lane 4: Human MBA-MD-231 cell lysate  
 All lanes: Anti-CD9 at 1:1000 dilution  
 Lysates/proteins at 20-50 µg per lane.  
 Predicted band size: 25 kDa  
 Observed band size: 25 kDa



## Western blot-Anti-CD9 pAb

Lane 1: Mouse liver tissue lysate  
 Lane 2: Mouse lung tissue lysate  
 Lane 3: Rat small intestine tissue lysate  
 Lane 4: Rat colon tissue lysate  
 All lanes: Anti-CD9 at 1:1000 dilution  
 Lysates/proteins at 20-50 µg per lane.  
 Predicted band size: 25 kDa  
 Observed band size: 25 kDa