

## Anti-Beta-TrCP Rabbit pAb



WL01258

For Research Use Only. Not For Use In Diagnostic Procedures

## Product Information

<b>Product name</b>	Anti-Beta-TrCP Rabbit pAb	
<b>Source</b>	Rabbit	
<b>Species reactivity</b>	Human	
<b>Tested applications</b>	Western blot	1:1000-1:2000
<b>Pack size</b>	50/100/200/500/1000μl	
<b>Storage</b>	Store at -20°C. <b>Avoid freeze/thaw cycles.</b>	
<b>Storage buffer</b>	Supplied in 20 mM phosphate (pH 7.5), 150 mM NaCl, 100 μg/ml BSA, 50% glycerol and less than 0.02% sodium azide	

## General Information

<b>Background</b>	β-tranducin repeats containing protein (Beta-TrCP) is a member of the F-box protein family which is characterized by an approximately 40 amino acid motif, the F-box. The F-box proteins are divided into 3 classes: Fbws containing WD-40 domains, Fbls containing leucine-rich repeats, and Fbxs containing either different protein-protein interaction modules or no recognizable motifs. The protein encoded by this gene belongs to the Fbws class; in addition to an F-box, this protein contains multiple WD-40 repeats. The encoded protein mediates degradation of CD4 via its interaction with HIV-1 Vpu. It has also been shown to ubiquitinate phosphorylated NFκBIA, targeting it for degradation and thus activating nuclear factor kappa-B.
<b>Immunogen</b>	Polyclonal antibody is produced by immunizing animals with a synthetic peptide of Beta-TrCP.
<b>Purification</b>	Polyclonal antibody was purified by protein A affinity chromatography.

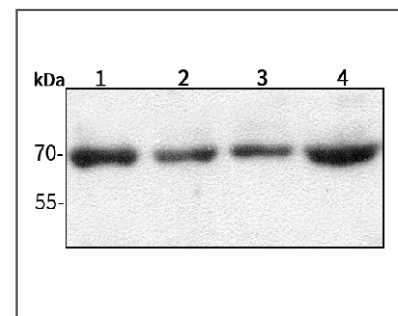
## Anti-Beta-TrCP Rabbit pAb



WL01258

For Research Use Only. Not For Use In Diagnostic Procedures

## Product Images



## Western blot-Anti-Beta-TrCP pAb

Lane 1: Human HepG2 cell lysate 20μg  
 Lane 2: Human Hela cell lysate 20μg  
 Lane 3: Human BGC-823 cell lysate 20μg  
 Lane 4: Human MGC-803 cell lysate 20μg  
 All lanes: Anti-Beta-TrCP at 1:1000 dilution  
 Lysates/proteins at 20-50 μg per lane.  
 Predicted band size: 69 kDa  
 Observed band size: 69 kDa