

Anti-CD38 Rabbit pAb



WL02870

For Research Use Only. Not For Use In Diagnostic Procedures

Product Information

Product name	Anti-CD38 Rabbit pAb	
Source	Rabbit	
Species reactivity	Human, Mouse, Rat	
Tested applications	WB	1:1000-1:2000
Pack size	50/100/200/500/1000µl	
Storage	Store at -20°C. Avoid freeze/thaw cycles.	
Storage buffer	Supplied in 20 mM phosphate (pH 7.5), 150 mM NaCl, 100 µg/ml BSA, 50% glycerol and less than 0.02% sodium azide	

General Information

Background

CD38 is a glycoprotein found on the surface of many immune cells (white blood cells), including CD4⁺, CD8⁺, B lymphocytes and natural killer cells. CD38 also functions in cell adhesion, signal transduction and calcium signaling. CD38 is a multifunctional ectoenzyme that catalyzes the synthesis and hydrolysis of cyclic ADP-ribose (cADPR) from NAD⁺ to ADP-ribose. These reaction products are essential for the regulation of intracellular Ca²⁺. CD38 has been used as a target in treating multiple myeloma by using daratumumab. Initial results show encouraging efficacy in patients with heavily pretreated and refractory myeloma.

Immunogen

Polyclonal antibody is produced by immunizing animals with a synthetic peptide of CD38.

Purification

Polyclonal antibody was purified by Protein A affinity chromatography.

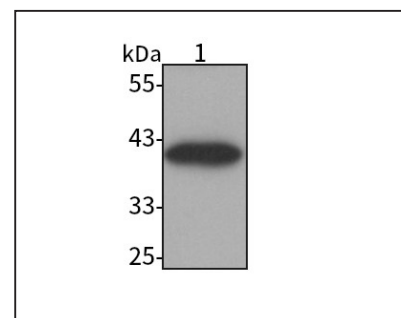
Anti-CD38 Rabbit pAb



WL02870

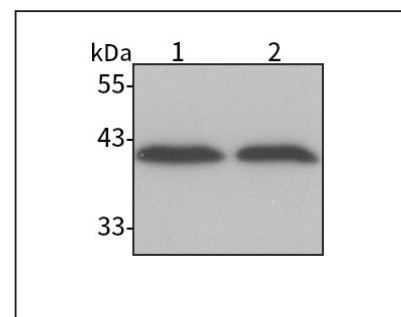
For Research Use Only. Not For Use In Diagnostic Procedures

Product Images



Western blot-Anti-CD38 pAb

Lane 1: Human Jurkat cell lysate
All lanes: Anti-CD38 at 1:1000 dilution
 Lysates/proteins at 20-50 µg per lane.
 Predicted band size: 34 kDa
 Observed band size: 42 kDa



Western blot-Anti-CD38 pAb

Lane 1: Mouse spleen tissue lysate
 Lane 2: Rat spleen tissue lysate
All lanes: Anti-CD38 at 1:1000 dilution
 Lysates/proteins at 20-50 µg per lane.
 Predicted band size: 34 kDa
 Observed band size: 42 kDa