

## Anti-GATA1 Rabbit pAb



WL02982

For Research Use Only. Not For Use In Diagnostic Procedures

## Product Information

<b>Product name</b>	Anti-GATA1 Rabbit pAb	
<b>Source</b>	Rabbit	
<b>Species reactivity</b>	Human, Mouse, Rat	
<b>Tested applications</b>	WB	1:500-1:1000
	IHC	1:100-1:400
<b>Cellular localization</b>	Nucleus.	
<b>Pack size</b>	50/100/200/500/1000µl	
<b>Storage</b>	Store at -20°C. <b>Avoid freeze/thaw cycles.</b>	
<b>Storage buffer</b>	Supplied in 20 mM phosphate (pH 7.5), 150 mM NaCl, 100 µg/ml	
	BSA, 50% glycerol and less than 0.02% sodium azide	

## General Information

<b>Background</b>	GATA1 is a member of the GATA family of zinc-finger transcription factors. Members of this family recognize the GATA motif which is present in the promoters of many genes. GATA-1 is erythroid-specific and is responsible for the regulated transcription of erythroid genes. It is an essential component in the generation of the erythroid lineage. Studies with a modified GATA consensus sequence, AGATCTTA, have shown that GATA-2 and GATA-3 recognize this mutated consensus while GATA-1 has poor recognition of this sequence. This indicates broader regulatory capabilities of GATA-2 and GATA-3 than GATA-1. Although expression patterns of the various GATA transcription factors may overlap, it is not yet apparent how the GATA factors are able to discriminate in binding their appropriate target sites.
<b>Immunogen</b>	Polyclonal antibody is produced by immunizing animals with a synthetic peptide of GATA1.
<b>Purification</b>	Polyclonal antibody was purified by immunogen affinity chromatography.

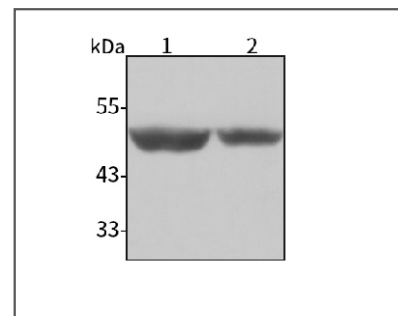
## Anti-GATA1 Rabbit pAb



WL02982

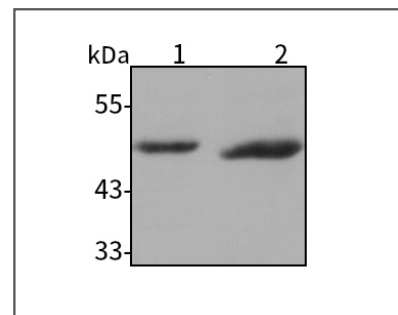
For Research Use Only. Not For Use In Diagnostic Procedures

## Product Images



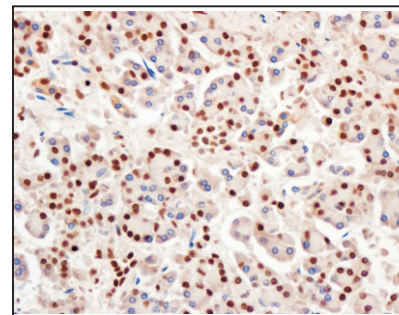
## Western blot-Anti-GATA1 pAb

**Lane 1:** Human Raji cell lysate  
**Lane 2:** Human K-562 cell lysate  
**All lanes:** Anti-GATA1 at 1:1000 dilution  
 Lysates/proteins at 20-50 µg per lane.  
 Predicted band size: 42 kDa  
 Observed band size: 43-55 kDa



## Western blot-Anti-GATA1 pAb

**Lane 1:** Mouse spleen tissue lysate  
**Lane 2:** Rat spleen tissue lysate  
**All lanes:** Anti-GATA1 at 1:1000 dilution  
 Lysates/proteins at 20-50 µg per lane.  
 Predicted band size: 42 kDa  
 Observed band size: 43-55 kDa



## Immunohistochemistry-Anti-GATA1 pAb

Immunohistochemical analysis of paraffin-embedded human pancreatic cancer using anti-GATA1 Rabbit Antibody at 1:150 dilution.  
 Perform heat mediated antigen retrieval with Tris-EDTA buffer pH 9.0

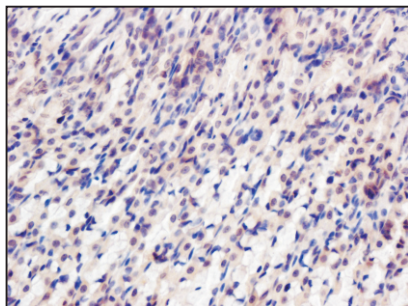
## Anti-GATA1 Rabbit pAb



WL02982

For Research Use Only. Not For Use In Diagnostic Procedures

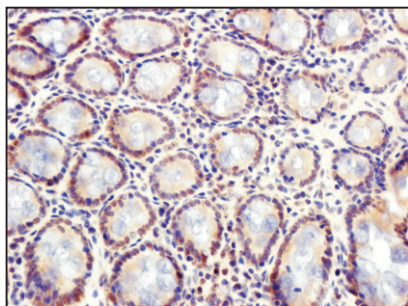
## Product Images



### Immunohistochemistry-Anti-GATA1 pAb

Immunohistochemical analysis of paraffin-embedded mouse stomach using anti-GATA1 Rabbit Antibody at 1:150 dilution.

Perform heat mediated antigen retrieval with Tris-EDTA buffer pH 9.0



### Immunohistochemistry-Anti-GATA1 pAb

Immunohistochemical analysis of paraffin-embedded rat colon using anti-GATA1 Rabbit Antibody at 1:150 dilution.

Perform heat mediated antigen retrieval with Tris-EDTA buffer pH 9.0