

Anti-PI3 Kinase p110 β Rabbit pAb

WL03380

For Research Use Only. Not For Use In Diagnostic Procedures

Product Information

Product name	Anti-PI3 Kinase p110 β Rabbit pAb	
Source	Rabbit	
Species reactivity	Human, Mouse, Rat	
Tested applications	WB	1:1000-1:2000
	IHC	1:500
	IF	1:500

Cellular localization Secreted and Cell membrane

Pack size 50/100/200/500/1000 μ l

Storage Store at -20°C. **Avoid freeze/thaw cycles.**

Storage buffer Supplied in 20 mM phosphate (pH 7.5), 150 mM NaCl, 100 μ g/ml BSA, 50% glycerol and less than 0.02% sodium azide

General Information

Background Phosphatidylinositol 3-kinase (PI 3-kinase) is composed of p85 and p110 subunits. p85 lacks PI 3-kinase activity and acts as an adapter, coupling p110 to activated protein tyrosine kinase. Various isoforms of the catalytic subunit (p110 α , p110 β , p110 γ , and p110 δ) have been isolated, and the regulatory subunits that associate with p110 α , p110 β , and p110 δ are p85 α and p85 β . In contrast, p110 γ associates with a p101 regulatory subunit that is unrelated to p85. Furthermore, p110 γ is activated by $\beta\gamma$ subunits of heterotrimeric G proteins.

Immunogen Polyclonal antibody is produced by immunizing animals with a synthetic peptide of PI3 Kinase p110 β .

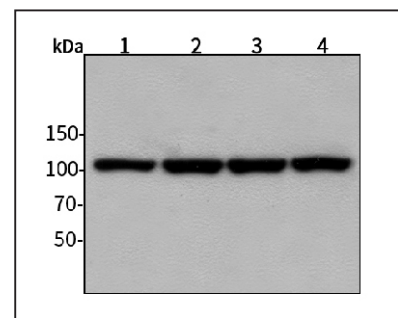
Purification Polyclonal antibody was purified by Protein A affinity chromatography.

Anti-PI3 Kinase p110 β Rabbit pAb

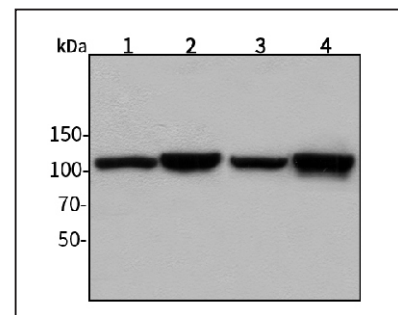
WL03380

For Research Use Only. Not For Use In Diagnostic Procedures

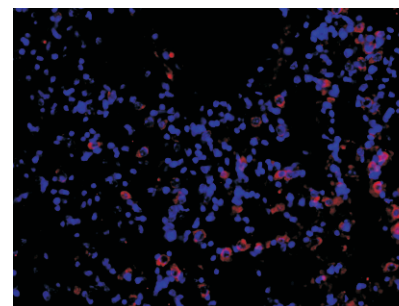
Product Images

Western blot-Anti-PI3 Kinase p110 β pAb

Lane 1: Human HepG2 cell lysate
 Lane 2: Human Hela cell lysate
 Lane 3: Human BGC-823 cell lysate
 Lane 4: Human MGC-803 cell lysate
 All lanes: Anti-PI3 Kinase p110 β at 1:1000 dilution
 Lysates/proteins at 20-50 μ g per lane.
 Predicted band size: 123 kDa

Western blot-Anti-PI3 Kinase p110 β pAb

Lane 1: Mouse kidney tissue lysate
 Lane 2: Mouse heart tissue lysate
 Lane 3: Rat lung tissue lysate
 Lane 4: Rat colon tissue lysate
 All lanes: Anti-PI3 Kinase p110 β at 1:1000 dilution
 Lysates/proteins at 20-50 μ g per lane.
 Predicted band size: 123 kDa

Immunofluorescence-Anti-PI3 Kinase p110 β pAb

Immunofluorescence analysis of paraffin-embedded mouse lung using anti-PI3 Kinase p110 β Rabbit Antibody at 1:500 dilution.
 Perform heat mediated antigen retrieval with Tris-EDTA buffer pH 9.0